



NEWS RELEASE

For Immediate Release

May 14, 2026

Contact: Jelly Kahler | Resource Conservation District of the Santa Monica Mountains | 818.514.5523

Topanga Lagoon Restoration Efforts Move Forward

Community invited to weigh in on restoration plans following the Palisades Fire

Los Angeles County, CA - Partners of the Topanga Lagoon Restoration Project will host a public meeting on Sunday, May 31, from 1:30 to 3:30 p.m. at Pierce College in Woodland Hills to share updates on ongoing restoration and design efforts for one of Southern California's last remaining coastal wetlands.

The 2025 Palisades Fire directly impacted the Topanga Lagoon ecosystem and nearby visitor-serving areas associated with Topanga Beach and lower Topanga State Park. During the meeting, project partners will provide updates on efforts related to lagoon restoration, the Caltrans bridge replacement, and the Los Angeles County Department of Beaches and Harbors Visitor and Emergency Services facilities at Topanga Beach. Community feedback gathered during the meeting will help inform ongoing planning efforts for the lagoon's future.

Community members will have an opportunity to share their perspectives and personal connections to Topanga Beach and Lagoon, as well as provide feedback, as part of the continuing planning process. Family-friendly activities will be available, along with Spanish translation services and additional accessibility accommodations upon request. Participants may attend either in person or virtually. The public is encouraged to RSVP in advance [via Eventbrite](#).

Located at the eastern edge of the Santa Monica Mountains, the Topanga Lagoon Restoration Project area includes Topanga State Park, managed by California State Parks, and Topanga Beach, managed by the Los Angeles County Department of Beaches and Harbors. The project also includes the nearby Caltrans right-of-way along Pacific Coast Highway and Topanga Canyon Boulevard. The Resource Conservation District of the Santa Monica Mountains serves as the project's grant manager.

The restoration effort seeks to preserve and expand the lagoon's unique biological, cultural, and recreational resources while improving coastal access, emergency response, and visitor amenities. The lagoon also serves as a natural filtration system

and stormwater buffer and provides habitat for rare and endangered species. Long-term planning efforts are also helping address the impacts of sea level rise and changing coastal conditions.

Learn more at topangalagoonrestoration.org

About the agencies behind the Topanga Lagoon Restoration Project

About the California Department of Parks and Recreation

Popularly known as State Parks, and the programs supported by its Office of Historic Preservation and divisions of Boating and Waterways and Off-Highway Motor Vehicle Recreation provides for the health, inspiration and education of the people of California by helping to preserve the state's extraordinary biological diversity, protecting its most valued natural and cultural resources, and creating opportunities for high-quality outdoor recreation. Learn more at California State Parks News online at parks.ca.gov/newsroom
[Facebook](#) | [X](#) | [Instagram](#) | [YouTube](#) | [Blog](#) | [Threads](#)

About the Los Angeles County Department of Beaches and Harbors

The Los Angeles County Department of Beaches and Harbors manages Topanga Beach and more than 20 miles of coastline, serving millions of residents and visitors each year. The department supports coastal access, environmental stewardship, and public recreation along the County's coast. Learn more at beaches.lacounty.gov

About the California Department of Transportation (Caltrans)

Caltrans manages more than 50,000 lane miles of California's highway system, including Pacific Coast Highway and Topanga Canyon Boulevard within the project area. The department is partnering on infrastructure improvements and long-term coastal resilience efforts associated with the restoration project. Learn more at dot.ca.gov

About the Resource Conservation District of the Santa Monica Mountains

For more than 65 years, the Resource Conservation District of the Santa Monica Mountains has supported watershed restoration, habitat conservation, and environmental education throughout the region. The organization serves as the grant manager for the Topanga Lagoon Restoration Project. Learn more at rcdsmm.org/newsletters

[Instagram](#) | [Facebook](#) | [Bluesky](#) | [YouTube](#) | [LinkedIn](#)

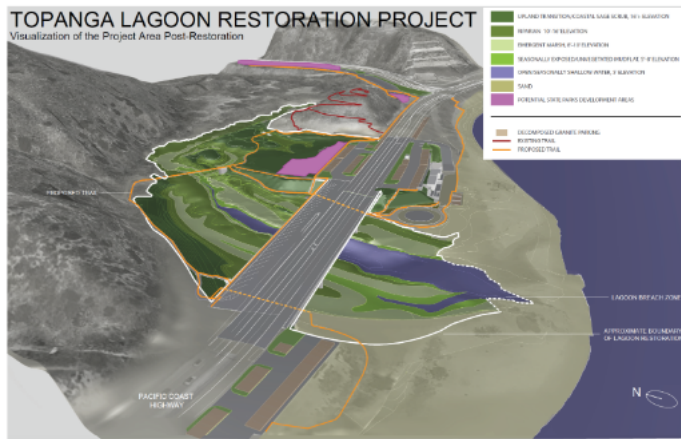
###

Resource Material

Project website: <https://www.topangalagoonrestoration.org/>

Images with captions and sources. Link to HD images [here](#).

1. Topanga Lagoon Restoration Project Overview



Caption: The Topanga Lagoon Restoration Project is composed of three distinct areas: Topanga State Parks managed by California State Parks; Pacific Coast Highway and Topanga Canyon Boulevard managed by Caltrans, and Topanga Beach managed by Los Angeles County Department of Beaches and Harbors. Image shows visualization of an expanded lagoon and beach facilities pulled inland for retreat.

Source: Resource Conservation District of the Santa Monica Mountains.

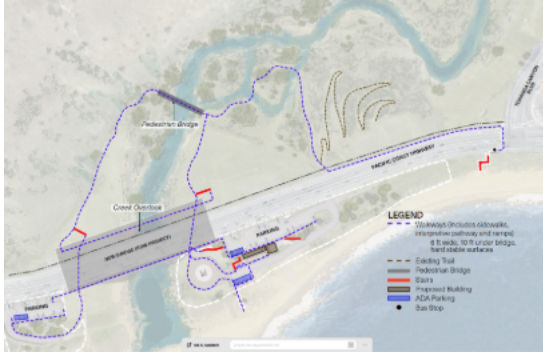
2. Palisades Fire Impact on Area



Caption: The January 2025 Palisades Fire burned through the project area, destroying all buildings in the Topanga State Park portion and damaged facilities within Topanga Beach. State Parks is initiating a recovery planning effort for all their facilities affected by the fires. More information is available on [Parks' website here](#).

Source: Resource Conservation District of the Santa Monica Mountains Stream Team. 2025.

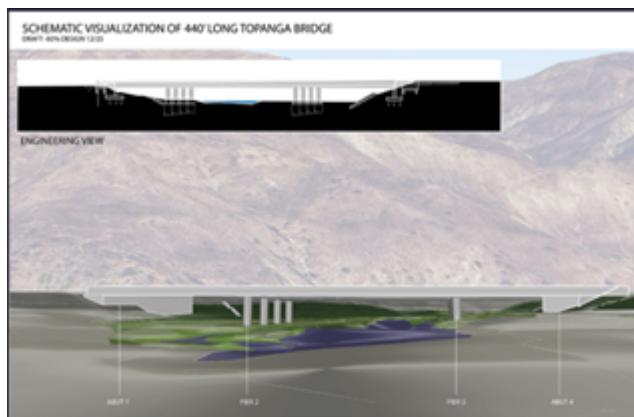
3. Topanga Beach Design Overview



Caption: Partners are working on the 30% design for Topanga Beach, which includes improved coastal access through expanded parking, trails and improved bus stops. Public safety will be improved via a new helipad and updated lifeguard building, and all beach development will be moved inland for proactive protection from sea level rise. Interpretive features and a living shoreline element are also included.

Source: Design Workshop Inc. 2026.

4. 60% Bridge/Lagoon Restoration Design



Caption: Partners are working on developing the 60% design for Topanga Lagoon and the associated PCH bridge. Expanding the bridge length from the existing 79' to 440' will allow the lagoon ecosystem to be expanded from ~ 1 acre to 8 acres, provide vital improvements for the migration and survival of endangered steelhead trout and tidewater goby, as well provide the ability for the ecosystem to adjust to sea level rise and other climate stressors by providing more space and areas for movement.

Sources: Resource Conservation District of the Santa Monica Mountains (upper), Moffatt and Nichol (lower).

5. Vital Species Being Protected



Caption: Endangered Southern California steelhead (*Oncorhynchus mykiss irideus*) are only known to currently breed within the Santa Monica Bay in Topanga Creek underlining the importance of the restoration project for the preservation of this species. This fish once populated most, if not all, of the creeks connected to the Santa Monica Bay.

Source: Resource Conservation District of the Santa Monica Mountains Stream Team.