

NOTICE OF AVAILABILITY

Topanga Lagoon Restoration Project Draft Environmental Impact Report

Date: February 12, 2024

To: Responsible and Trustee Agencies, Interested Organizations, and Interested Parties

Lead Agency: California Department of Parks and Recreation

Project: Topanga Lagoon Restoration Project Draft Environmental Impact Report
(State Clearinghouse No. 2022050478)

Review Period: February 12, 2024, to April 12, 2024

This Notice of Availability (NOA) has been prepared to notify responsible and trustee agencies, interested organizations, and interested parties that the California Department of Parks and Recreation (State Parks), as the Lead Agency pursuant to the California Environmental Quality Act (CEQA), has prepared a Draft Environmental Impact Report (Draft EIR) for the proposed Topanga Lagoon Restoration Project (proposed project) that is available for review and comment. The Draft EIR was prepared in compliance with CEQA to provide agencies and the public with information on the potential significant environmental impacts of the proposed project. The Draft EIR analyzes four alternatives to restore Topanga Lagoon: the No Project/No Build–Managed Decline Alternative (Alternative 1) and three Build Alternatives (Alternatives 2–4). The Proposed Project was designed to minimize impacts on existing natural resources and contains mitigation measures that would reduce or avoid significant environmental effects. In addition, the Draft EIR was prepared in accordance with the CEQA-Plus requirements of the U.S. Environmental Protection Agency, to fulfill the requirement of potential federal funding partners to comply with the National Environmental Policy Act (NEPA).

Project Location: The Proposed Project is located along the Pacific Ocean coastline at the base of the Santa Monica Mountains of unincorporated Los Angeles County, California, within the Santa Monica Mountains National Recreation Area, a large area of open space and parklands. A small portion of the project area lies within the City of Malibu (**Figure 1**). The Project area includes three publicly managed areas:

- Pacific Coast Highway (PCH) and Topanga Canyon Boulevard (TCB), managed by the California Department of Transportation (Caltrans).

- Lower Topanga State Park, managed by the California Department of Parks and Recreation (State Parks).
- Topanga Beach, owned by the County of Los Angeles (County) and managed by the County Department of Beaches and Harbors (DBH).

Project Description: The Proposed Project involves the expansion of the Topanga Creek and Lagoon ecosystem, replacement of the existing PCH bridge (SR-1 #53-0035) with a longer bridge to accommodate the lagoon expansion, development of visitor services in lower Topanga State Park, and relocation of DBH facilities on Topanga Beach that are threatened by sea level rise (SLR). The Proposed Project includes construction of new visitor services at the northwest corner of the intersection of PCH and TCB, referred to as the “Gateway Corner.” The Proposed Project also evaluates beneficial reuse options for excavated sediment and options for on- and off-site wastewater disposal. Project features are illustrated in **Figures 2a through Figure 4c**.

Environmental Impacts: The Draft EIR evaluates the potential impacts of the proposed project and, for identified potentially significant impacts, the Draft EIR recommends mitigation measures that would reduce the impacts of the proposed project to a less than significant level for the following environmental topics: aesthetics, air quality, biological resources, cultural resources, geology and soils, hazards and hazardous materials, marine resources, noise, recreation, transportation, utilities, tribal cultural resources, and wildfire.

Document Availability: The NOA and Draft EIR may be viewed and downloaded from the following website address: <https://www.topangalagoonrestoration.org>. Printed copies of the Draft EIR may be available for public review at the following locations:

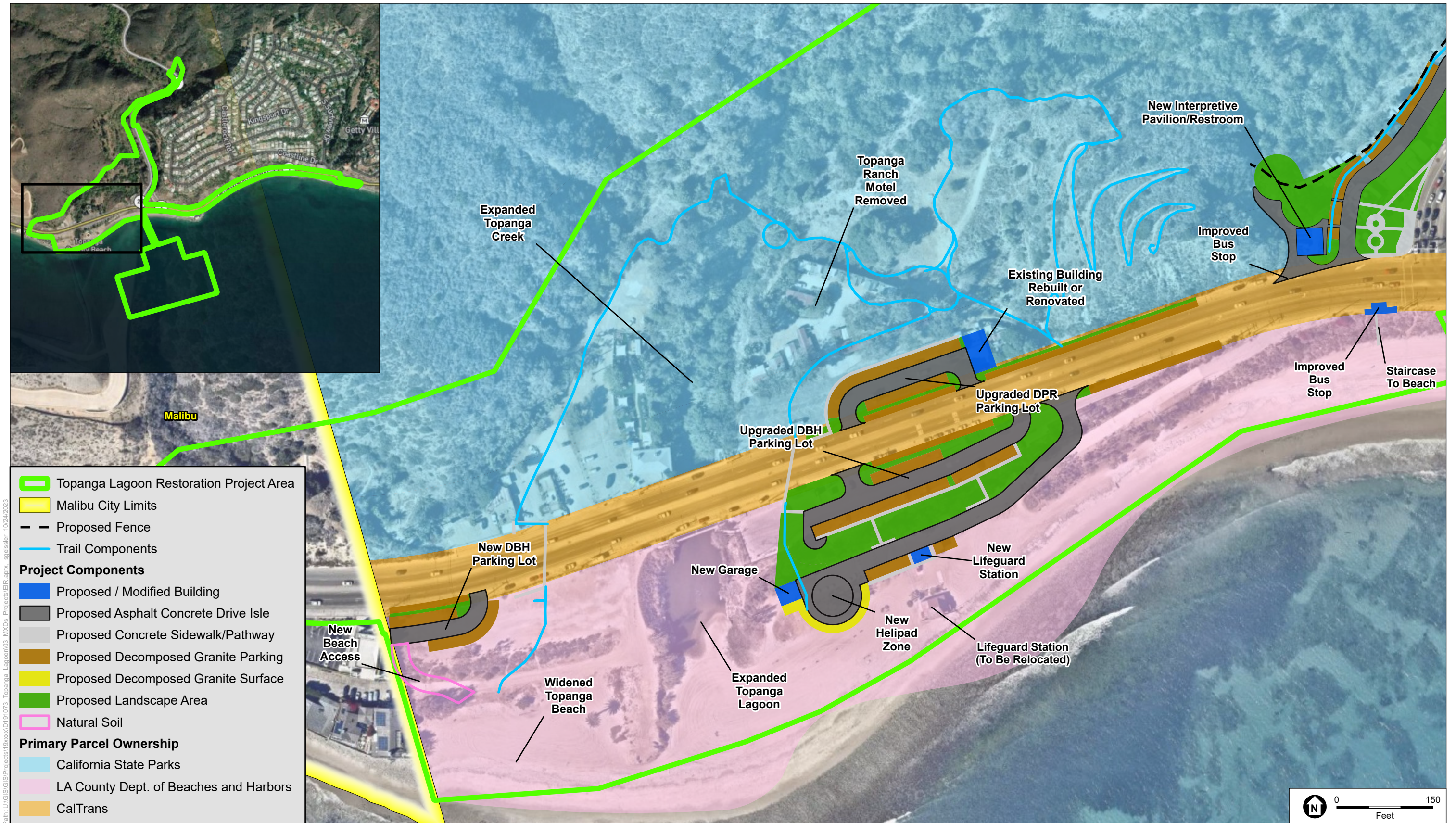
- Topanga Library: 122 N Topanga Canyon Blvd, Topanga, CA 90290
- Malibu Library: 23519 West Civic Center Way, Malibu, CA 90265
- Calabasas Library: 200 Civic Center Way, Calabasas, CA 91302
- Malibu Creek State Park’s Administration Office: 1925 Las Virgenes Road, Calabasas, CA 91302
- Resource Conservation District of the Santa Monica Mountains (RCDSMM) Office: 4505 Las Virgenes Rd, Unit 215, Calabasas, CA 91302

Public Information Presentation: State Parks will hold two public meetings to receive comments on the environmental analysis in the Draft EIR. The meetings will include a brief presentation providing an overview of the proposed project and findings of the Draft EIR. Recordings of both presentations will also be available to review after each meeting at youtube.com/@rcdsmm. RSVPs are required at <https://www.topangalagoonrestoration.org/whats-new>. Please see below for public meeting dates and locations:

- Saturday, February 24, from 10 a.m. to noon at the Annenberg Community Beach House, 415 Pacific Coast Highway, Santa Monica, CA 90402. This meeting will be live streamed at youtube.com/@rcdsmm.
- Wednesday, February 28, from 6 to 8 p.m. at the Topanga Community Center located, 1440 N Topanga Canyon Blvd., Topanga, CA 90290.

Public Review and Comments: State Parks is soliciting comments from the public regarding the content of the environmental information provided in the Draft EIR. Written comments will be accepted through April 12, 2024, until 5 p.m. and can be submitted the following ways:

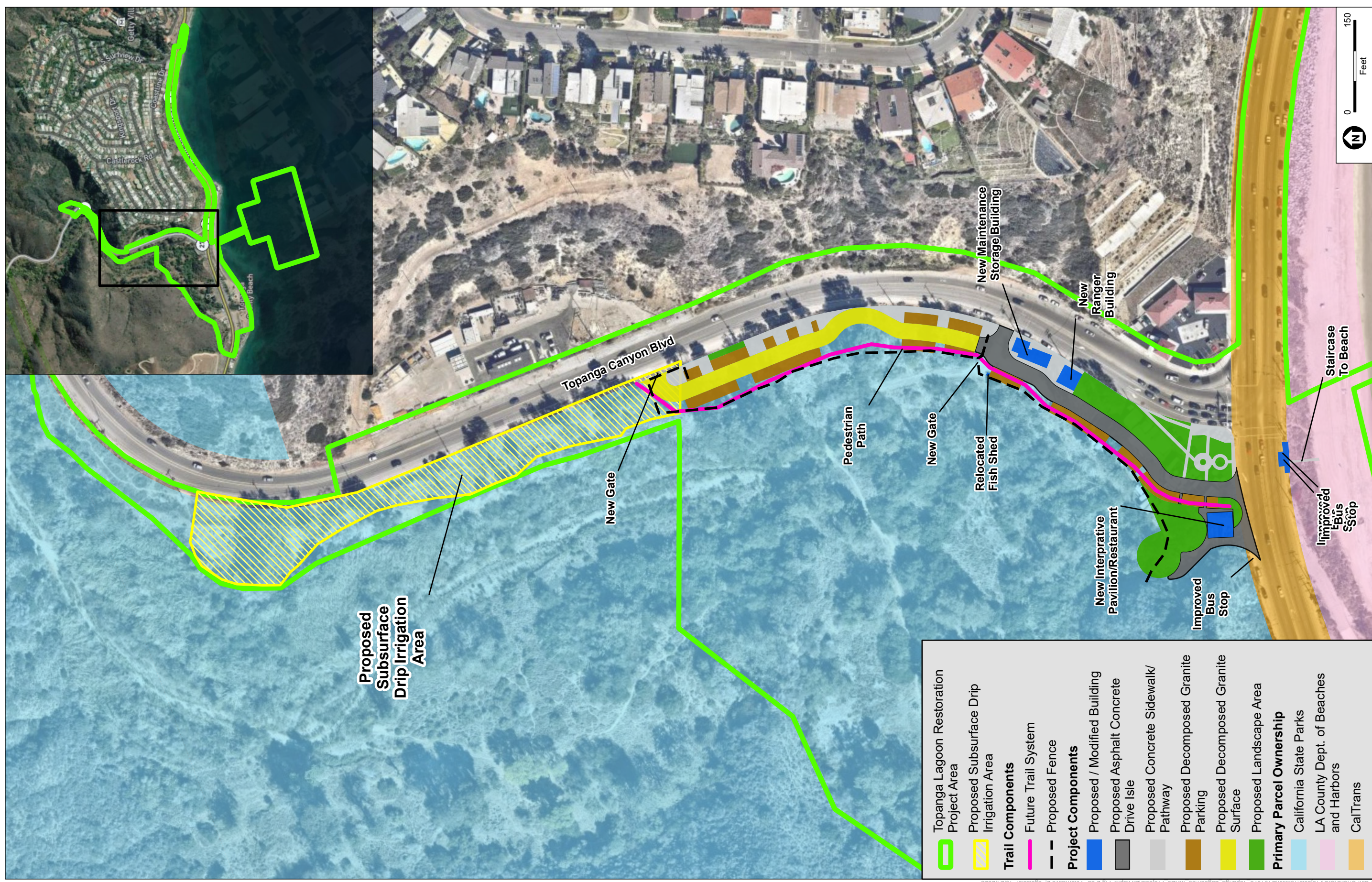
- Website: Topangalagoonrestoration.org/
- Email: TopangaLagoonRestoration@gmail.com
- Mail: California Department of Parks and Recreation, Attn: John Ota, Environmental Scientist, 1925 Las Virgenes Road, Calabasas, CA 91302.



SOURCE: NearMap, 2022-02-03 (Aerial); ESA, 2022

Topanga Lagoon Restoration Project
Figure 2a
 Project Area under Alternative 2





	Topanga Lagoon Restoration Project Area
	Proposed Subsurface Drip Irrigation Area
Trail Components	
	Future Trail System
	Proposed Fence
Project Components	
	Proposed / Modified Building
	Proposed Asphalt Concrete Drive Isle
	Proposed Concrete Sidewalk/ Pathway
	Proposed Decomposed Granite Parking
	Proposed Decomposed Granite Surface
	Proposed Landscape Area
Primary Parcel Ownership	
	California State Parks
	LA County Dept. of Beaches and Harbors
	CalTrans

SOURCE: NearMap, 2022-02-03 (Aerial); ESA, 2022

Topanga Lagoon Restoration Project
Figure 2b
 Project Area under Alternative 2

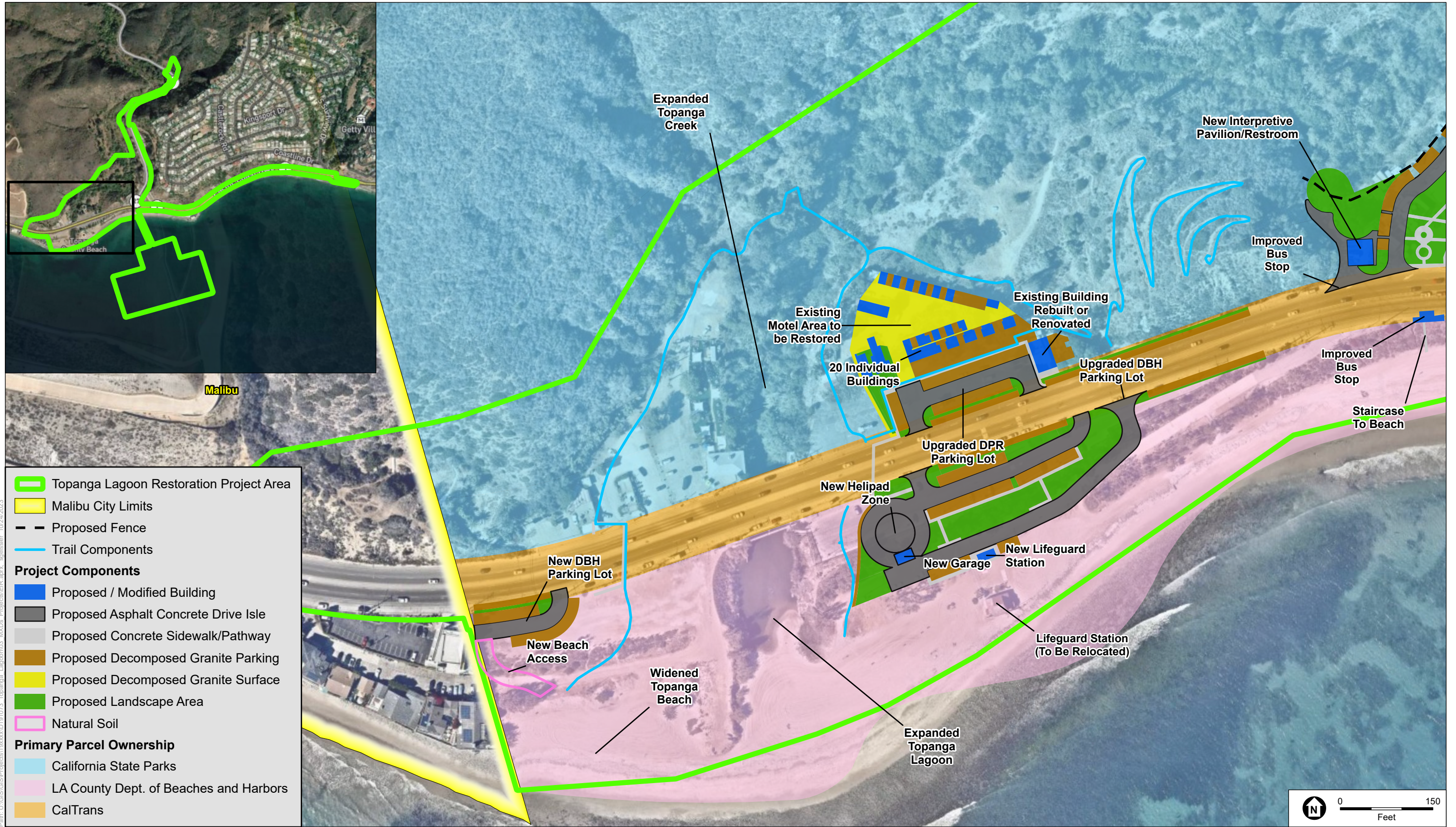




Path: U:\GIS\GISProjects\0000\01\01073_Topanga_Lagoon\03_MXD\Projects\ER\anrx_splsefer_1024\2023

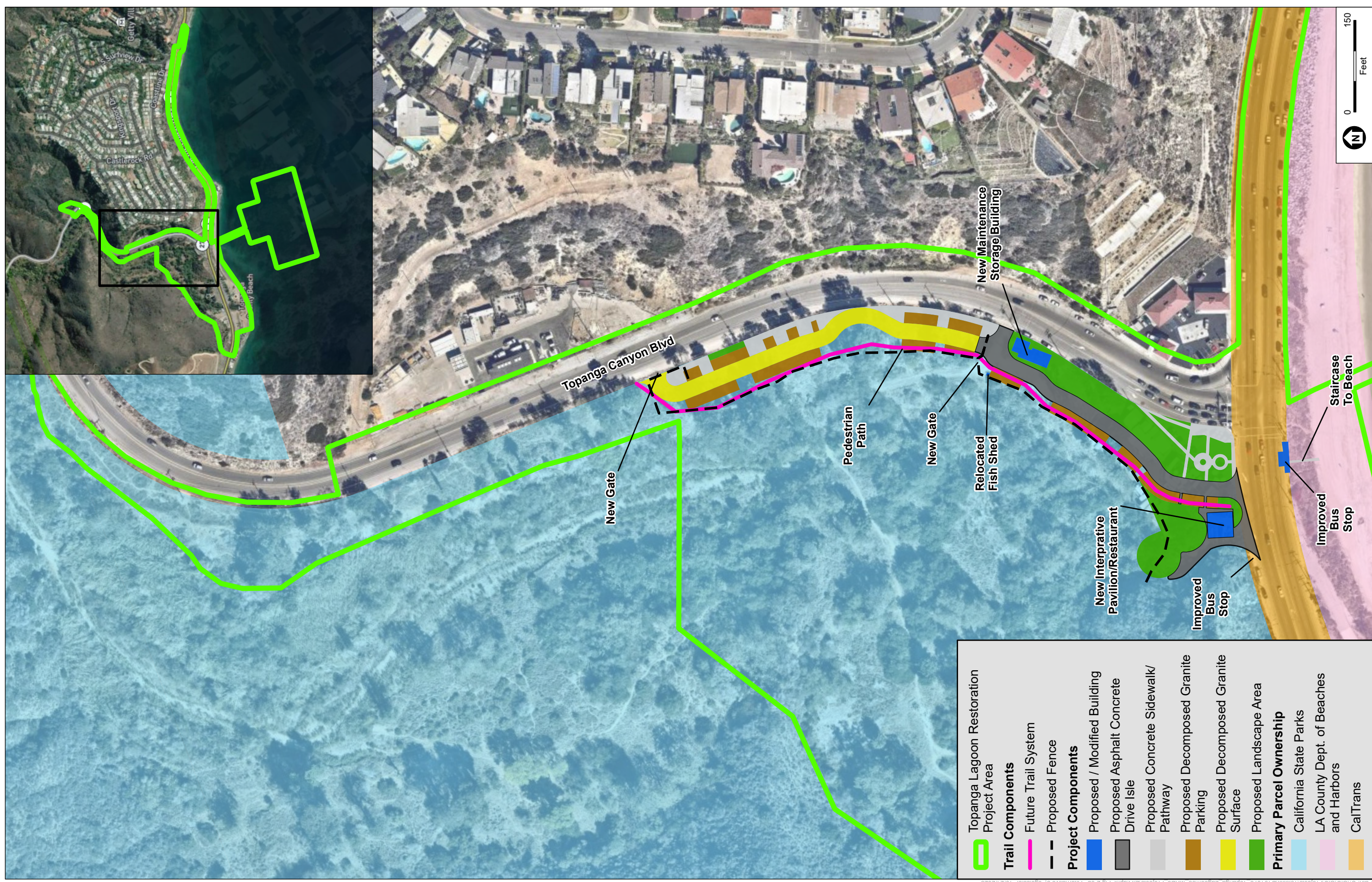
SOURCE: NearMap, 2022-02-03 (Aerial); ESA, 2022

Topanga Lagoon Restoration Project
Figure 2c
 Project Area under Alternative 2



SOURCE: NearMap, 2022-02-03 (Aerial); ESA, 2022

Topanga Lagoon Restoration Project
Figure 3a
 Project Area under Alternative 3



SOURCE: NearMap, 2022-02-03 (Aerial); ESA, 2022

Topanga Lagoon Restoration Project
Figure 3b
 Project Area under Alternative 3



Path: U:\GIS\GISProjects\0000\01\01073_Topanga_Lagoon\03_MXD\Projects\ER\anrx_splsefer_1024\2023

SOURCE: NearMap, 2022-02-03 (Aerial); ESA, 2022

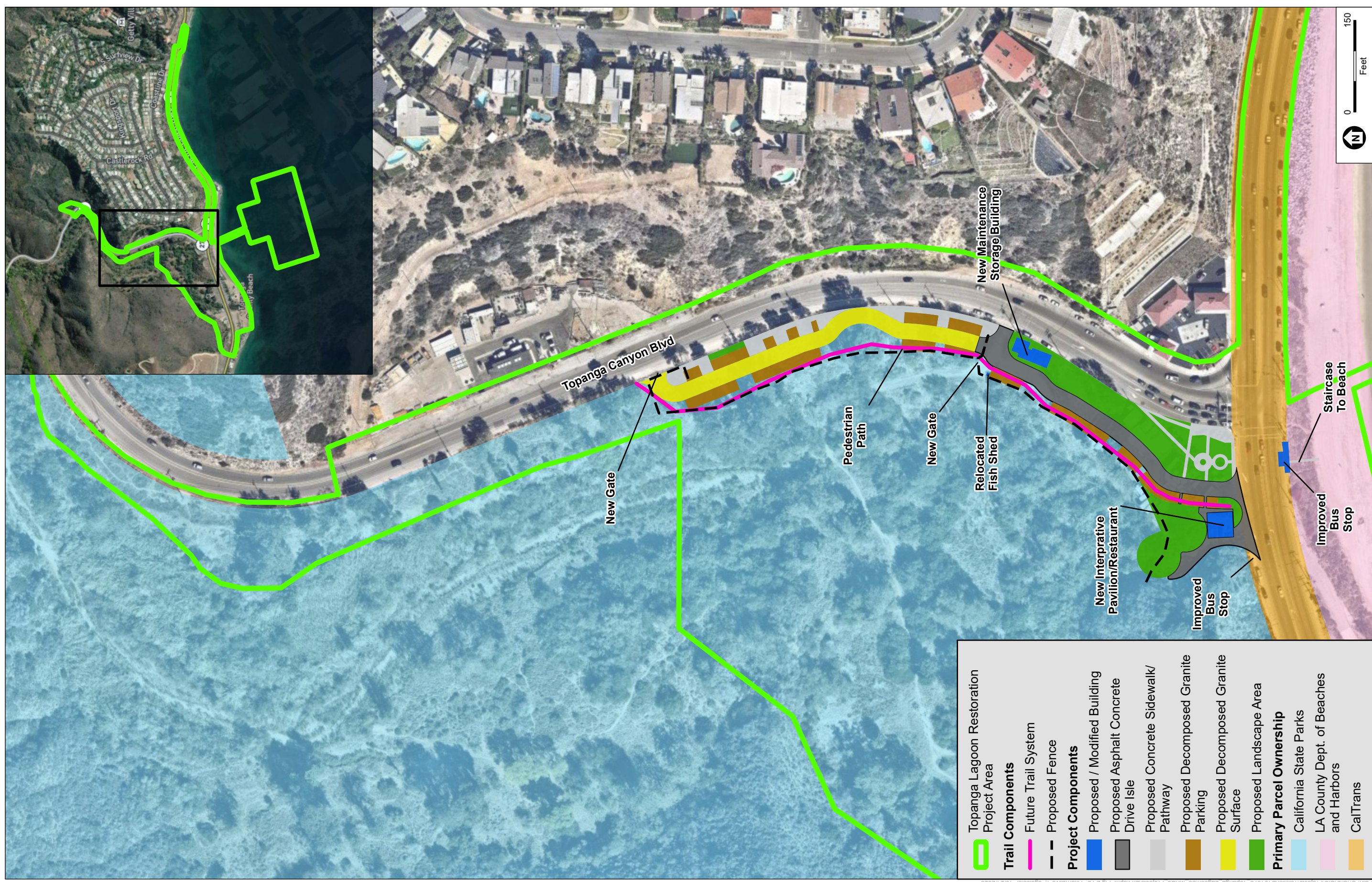
Topanga Lagoon Restoration Project
Figure 3c
 Project Area under Alternative 3



Path: U:\GIS\Projects\10000\101073 - Topanga Lagoon\03 MXDs - Projects\EIR\aprx_splines\1024\2023

SOURCE: NearMap, 2022-02-03 (Aerial); ESA, 2022

Topanga Lagoon Restoration Project
Figure 4a
 Project Area under Alternative 4



SOURCE: NearMap, 2022-02-03 (Aerial); ESA, 2022

Topanga Lagoon Restoration Project
Figure 4b
 Project Area under Alternative 4



Path: U:\GIS\GISProjects\06000\01\01073_Topanga_Lagoon\03_MXD\Projects\ER\anrx_splsefer_10242023

SOURCE: NearMap, 2022-02-03 (Aerial); ESA, 2022

Topanga Lagoon Restoration Project
Figure 4c
 Project Area under Alternative 4