

# WELCOME!! ¡Bienvenido!

The meeting will begin shortly. Prior to beginning the presentation, the posters available for review at Pierce College will be shared for those joining virtually. La reunión comenzará en breve. Antes de iniciar la presentación, se compartirán los pósteres disponibles para su consulta en Pierce College con quienes se unan virtualmente.



# TOPANGA LAGOON RESTORATION PROJECT

Project Overview &  
Design Progress

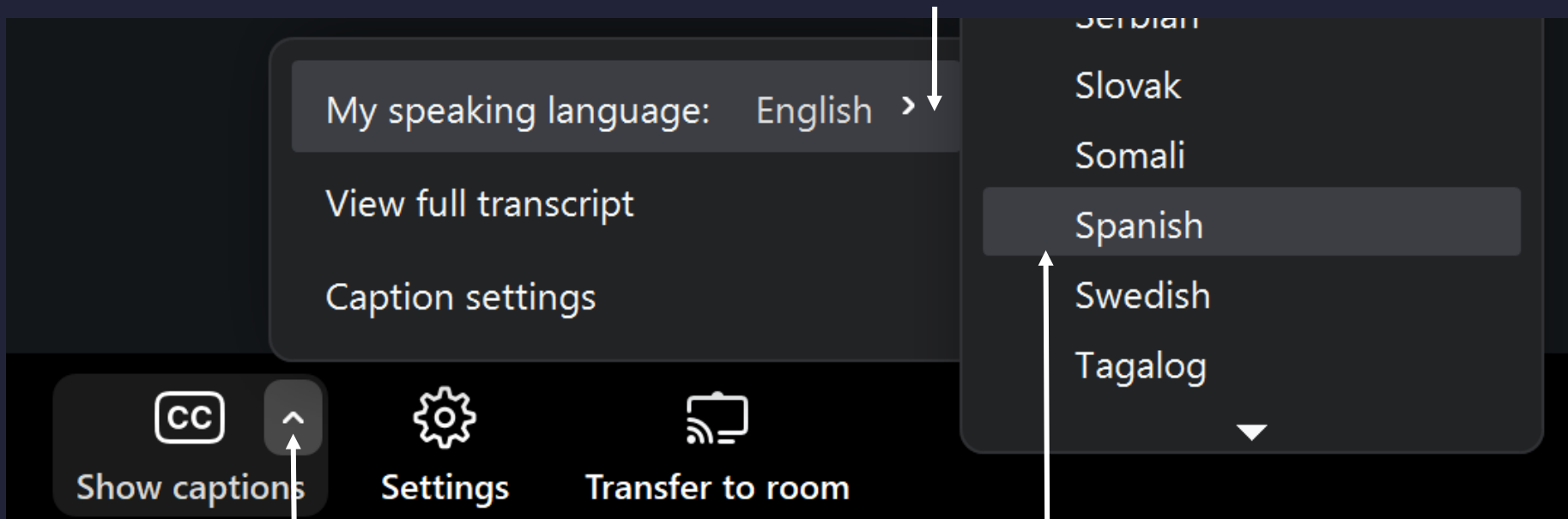
5/31/26



PCDSMM

# ESPAÑOL SUBTITULOS

2: Seleccione Spanish (Español) como idioma de lectura



1: Haga clic en el botón de "Show Captions"

3: Haga clic en el flecha al lado del botón CC

# ZOOM TOOLS

During breakout sessions,  
click raise hand to be called  
on and come off mute



Chat



Raise hand



Q&A



Transcript



Show captions



Settings



Transfer to room

Use the Chat and Q&A boxes to  
ask questions. Questions will be  
answered at the end of the  
presentation and during  
breakout sessions

Click "Show  
Captions" to view  
captions

# MEETING GUIDELINES & ETIQUETTE

1. Share your thoughts & feedback regarding the project. We value your input! Have fun! *Comparta sus ideas y comentarios sobre el proyecto. ¡Su opinión es importante para nosotros! ¡Gracias por participar!*
2. Q&A will be at the end of the presentations. Webinar participants may also use the Chat and Q&A button at the bottom of Zoom to type in your question at any time. *La sesión de preguntas y respuestas tendrá lugar al final de las presentaciones. Para el seminario web, utilice los botones de Chat y Preguntas y respuestas en Zoom para escribir su pregunta en cualquier momento.*
3. Refrain from using inappropriate or vulgar language. *Abstengase de usar lenguaje inapropiado o vulgar.*



# THANK YOU!

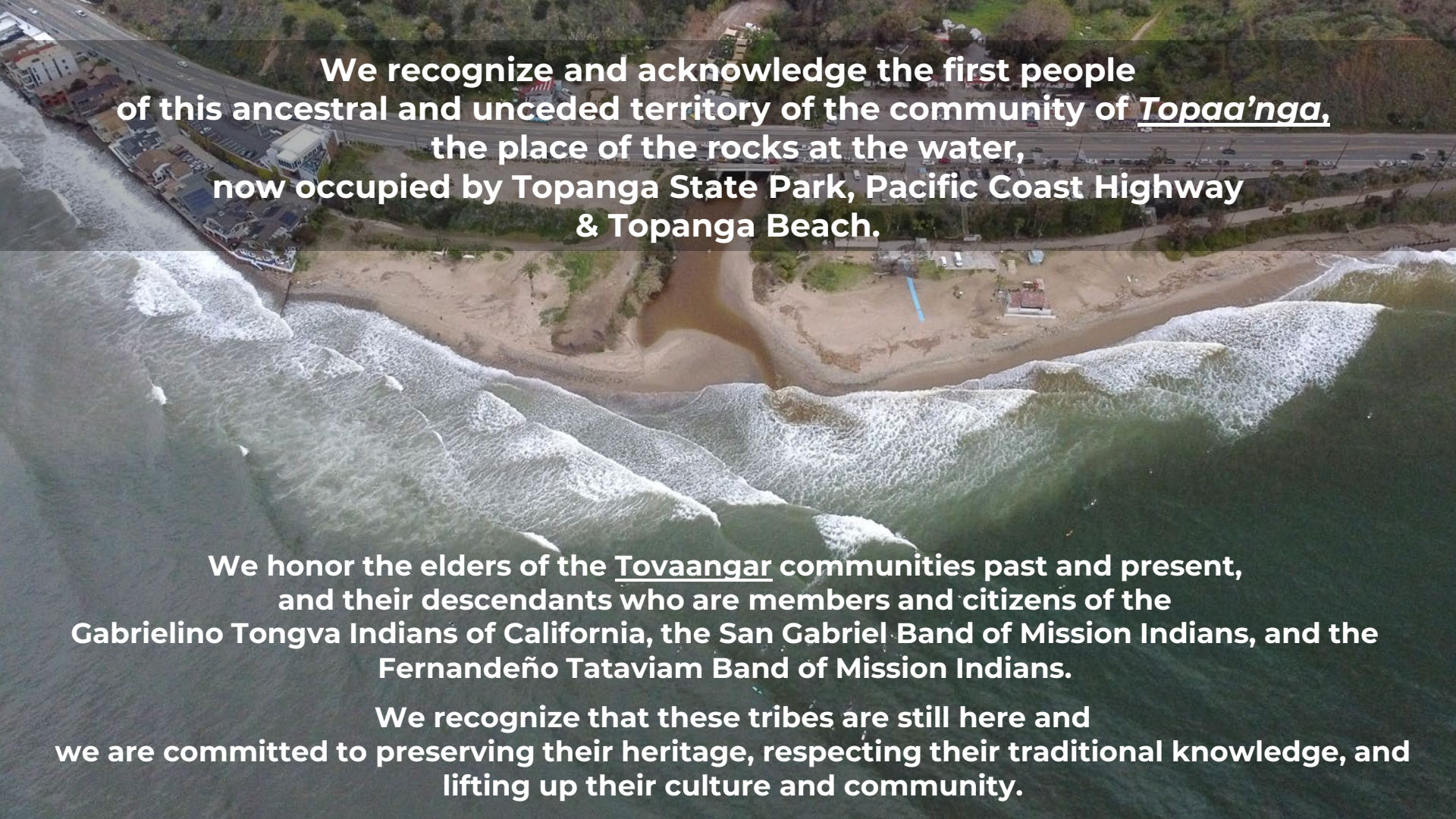


# LAND ACKNOWLEDGEMENT

## Pierce College & Topanga Lagoon Restoration Project

Pierce College: Today we meet with you from the ancestral and unceded lands of the Pipimaram lineage whose descendants are citizens of the Fernandeano Tataviam Band of Mission Indians. We recognize that the Pipimaram are still here and acknowledge the importance of continuing to uplift their culture and community.



An aerial photograph of a coastline. In the foreground, dark green ocean waves with white foam are breaking onto a sandy beach. The beach is light brown and has some sparse vegetation. Behind the beach, there's a paved road with cars and a building with a blue roof. Further back, there are more buildings and a road with cars. The background shows a hilly area with green trees and some houses.

**We recognize and acknowledge the first people  
of this ancestral and unceded territory of the community of Topaa'nga,  
the place of the rocks at the water,  
now occupied by Topanga State Park, Pacific Coast Highway  
& Topanga Beach.**

**We honor the elders of the Tovaangar communities past and present,  
and their descendants who are members and citizens of the  
Gabrielino Tongva Indians of California, the San Gabriel Band of Mission Indians, and the  
Fernandeño Tataviam Band of Mission Indians.**

**We recognize that these tribes are still here and  
we are committed to preserving their heritage, respecting their traditional knowledge, and  
lifting up their culture and community.**

# WHAT WE ARE COVERING TODAY

## 4 SHORT PRESENTATIONS & QUESTION TIME

- Project Overview

 Bridge/Lagoon  
Restoration (60% Design)

 State Parks Fire Recovery  
Planning Update

 Topanga Beach  
(30% Design)

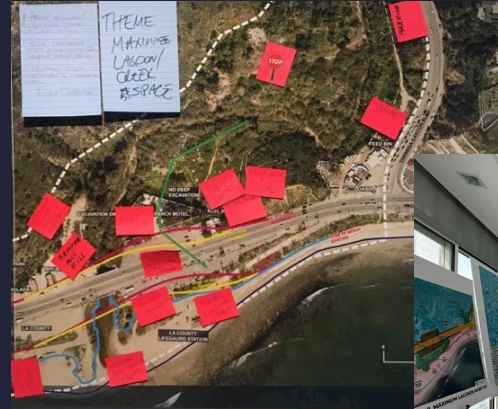


# DEEP DIVE AT TOPANGA BEACH

## 3 BREAKOUT STATIONS

- Topanga Beach Recreation & Public Safety Design
- Topanga Beach & Living Shoreline
- Interpretation & Aesthetics

**HEAR MORE DETAILS  
ASK QUESTIONS  
SHARE YOUR STORIES**



# PROJECT PARTNERS

RCDSMM

CALIFORNIA STATE PARKS

CALTRANS

LOS ANGELES COUNTY:

- Beaches & Harbors Dept
- Fire Dept



A group of people, including men and women, are standing on a sandy beach. They are looking out towards the ocean under a bright, slightly cloudy sky. The scene is captured in a cinematic style with high contrast. The text 'MEET OUR PUBLIC REPRESENTATIVES' is overlaid in the center in a large, bold, white font.

# MEET OUR PUBLIC REPRESENTATIVES

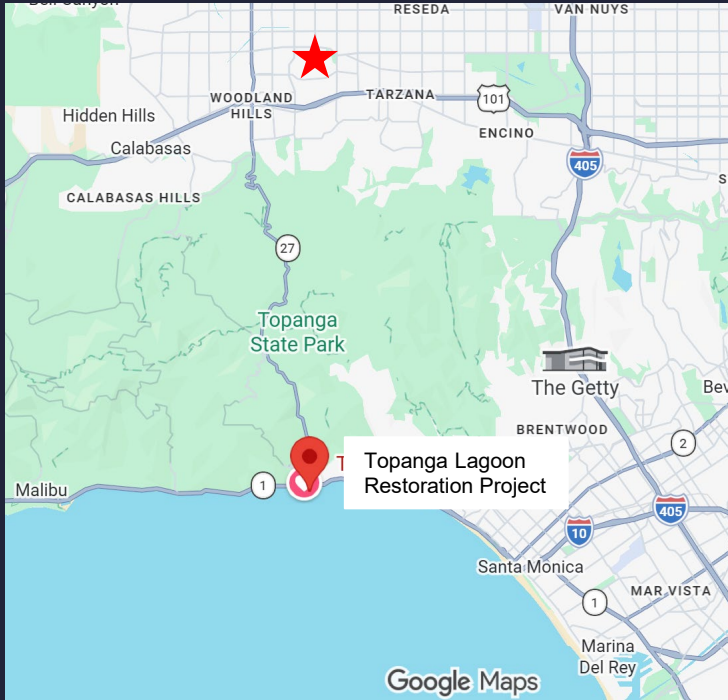
# MENTI QUESTION

What brings you to today's workshop? (select all that apply)

A landscape photograph of a river with a bridge in the background, overlaid with a dark blue banner containing the text 'PROJECT OVERVIEW'. The scene shows a wide river with a sandy and rocky bank in the foreground. A large piece of driftwood lies on the bank. In the background, a concrete bridge spans the river, with hills and trees under a clear blue sky.

# PROJECT OVERVIEW

# WHERE IS THE PROJECT?



# EVERYONES' PROJECT

## LOCALS

- Families, School Groups
- Beach & Nature Lovers
- Surfers, Commuters

## REGIONAL COASTAL ACCESS

- Closest beach to SFV, Palisades & W Los Angeles
- ~1M Annual Beach Visitors

## REGIONAL RECREATION

- E Gateway to SMMNRA



## NATURAL, CULTURAL & RECREATIONAL PUBLIC TREASURES

# WHY IS THIS PROJECT IMPORTANT?

Public Safety/Emergency Services Improvements

Storm Damage/SLR Response

Improve/Protect Coastal Access

Nearshore Nourishment

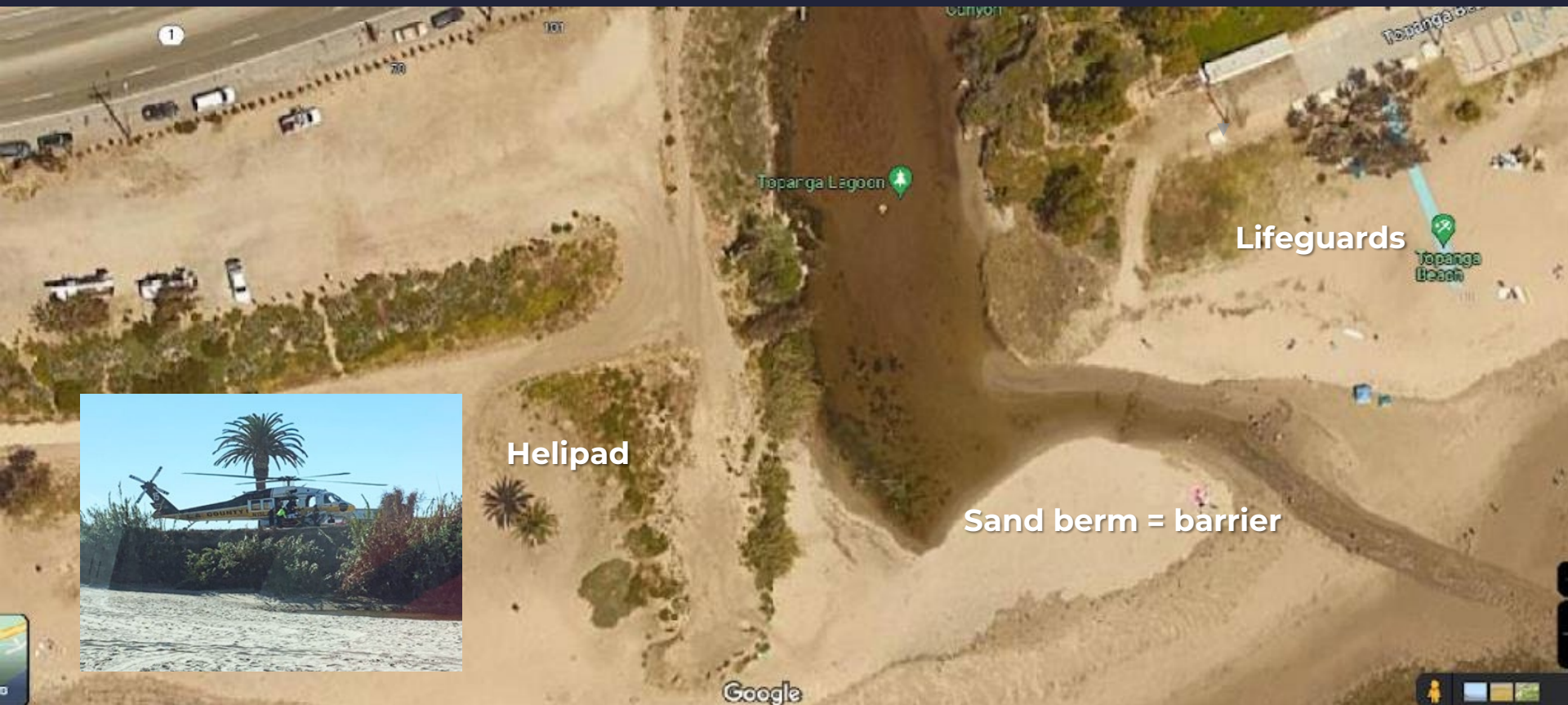
Endangered Fish Refuge

Rare Habitat Restoration

Tribal/Cultural Resource Protections



# EMERGENCY SERVICES BARRIERS



Helipad

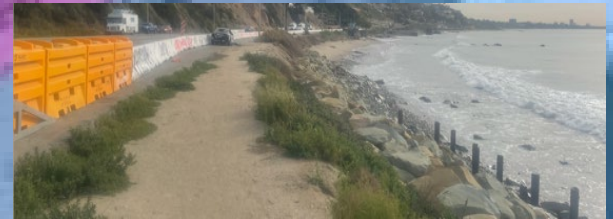
Sand berm = barrier

Lifeguards

# SEA LEVEL RISE THREATS

USGS CoSMoS 3.3 ft (1m) SLR

-  100-yr Storm Inundation
-  Annual Storm Inundation



# STORM VULNERABILITY



RCDSMM

Beach Loss



RCDSMM

Structures Threatened

# RECREATION/COASTAL ACCESS NEEDS

- Limited Access to Lower Topanga State Park
- Popular Beach, Limited Visitor Services



# NEED FOR DISTRIBUTED PARKING & ACCESS

parking (22 spaces)

21 1

all of this is existing concession parking, sometimes used as opportunistic fee beach parking by concessionaire

existing concession parking (20 spaces)

63 18

41 29

30

49

87 10

87



# DISAPPEARING & DAMAGED ECOSYSTEMS



Many Sensitive Ecosystems



Chance to Repair Damage

# A LAST REFUGE FOR ENDANGERED FISH

## Tidewater Goby

- Prefers freshwater lagoon
- Healthy population in Topanga
- Need refuge from storm flows

## Steelhead Trout

- Anadromous life cycle
- Project is key to species survival
- Only reproducing population in SMM
- Need for improved fish passage



# TRIBAL CULTURAL RESOURCES PROTECTION & INTERPRETATION

- Protect Gabrielino Tongva & Fernandeño Tataviam Cultural Sites
- How Do We Honor & Interpret *Topaa'nga* Heritage Onsite



# PROJECT HISTORY IN A NUTSHELL



2004: INITIAL CALTRANS STUDY (PSR/PDS)

2019-2021:

BASELINE STUDIES (some ongoing)

4 PUBLIC INPUT MEETINGS


2022-24: ENVIRONMENTAL REVIEW

- 4 Alternatives Considered
- 4 Public Meetings
- Multiple Focus Group Mtgs (Surfers, Neighbors, Resource Grps, TAC)
- 9/2024 Certified FEIR: Hybrid Alternative 3A Selected



# KEY PROJECT ELEMENTS

## PUBLIC SAFETY

- Longer/Higher PCH Bridge (79' to 460')
- Better Lifeguard Sightlines
- Utility Undergrounding
-  Response Times w/ Co-located Helipad

## SLR PROTECTION

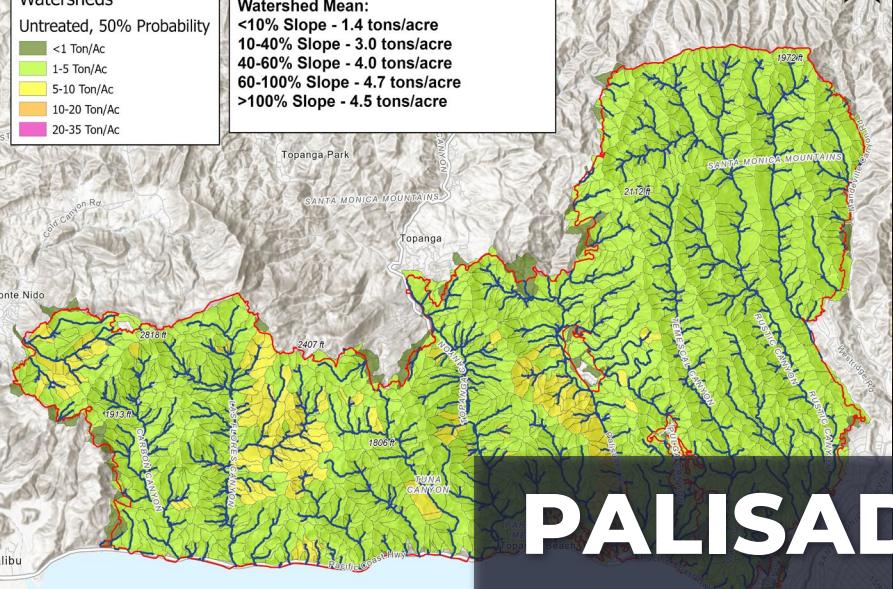
- Beach Facilities Shifted Inland
- More Beach Area, Nearshore Nourishment Downcoast

## IMPROVED COASTAL ACCESS

- More/Distributed Parking, Better Bus Stops, Linked Trail System
- Visitor Services/Interpretive Elements

## RESOURCE PROTECTION

- 8-acre Lagoon Restoration, 30+ Acres Habitat Enhancement
- Improved Endangered Fish Passage/Refuge
- Living Shoreline Element



# PALISADES FIRE

## January 2025



# SERIOUS DAMAGE

## ENTIRE AREA BURNT OVER

- Parks Loses All, Significant Erosion/Mud Flow
- Bridge Still OK
- Beach Structures More Limited Damage



# NEW BASELINE


## SHORT-TERM

- Access to PCH and Site Constrained
- EPA and USACE Cleanups, Post-fire Site Use
- Hazardous Waste Concerns
- SCE Emergency Undergrounding



# ONLY ONE PROJECT ELEMENT CHANGED

## PUBLIC SAFETY

- Longer/Higher PCH Bridge (79' to 440')
- Better Lifeguard Sightlines
- Utility Undergrounding
-  Response Times w/ Co-located Helipad

## SLR PROTECTION

- Beach Facilities Shifted Inland
- More Beach Area, Nearshore Nourishment Downcoast

## IMPROVED COASTAL ACCESS

- More/Distributed Parking, Better Bus Stops, Linked Trail System
- Parks Visitor Services TBD/Interpretive Elements

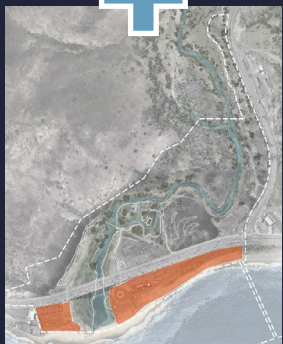
## RESOURCE PROTECTION

- 8-acre Lagoon Restoration, 30+ Acres Habitat Enhancement
- Improved Endangered Fish Passage/Refuge
- Living Shoreline Element

# 3 DESIGN PATHS, 1 VISION

## TOPANGA LAGOON RESTORATION PROJECT

Visualization of the Project Area Post-Restoration



# ANTICIPATED DESIGN SCHEDULE

- SPRING 2026:** Lagoon Restoration 60%, Topanga Beach 30%
- SUMMER 2026:** Parks Recovery Planning Starts
- WINTER 2026:** Topanga Beach 60%, Parks Recovery Plng Cont.
- SPRING 2027:** Lagoon Restoration / Topanga Beach 90%
- SUMMER 2027:** Parks Recovery Planning Complete,  
Design Schedule TBD
- WINTER 2027:** Lagoon/Beach 100% Design (Funding Required)
- 2029+:** Earliest Construction, Post Olympics (Funding Required)

# MENTI QUESTION

What project goal feels most important to you? (select 3)

# MENTI QUESTION

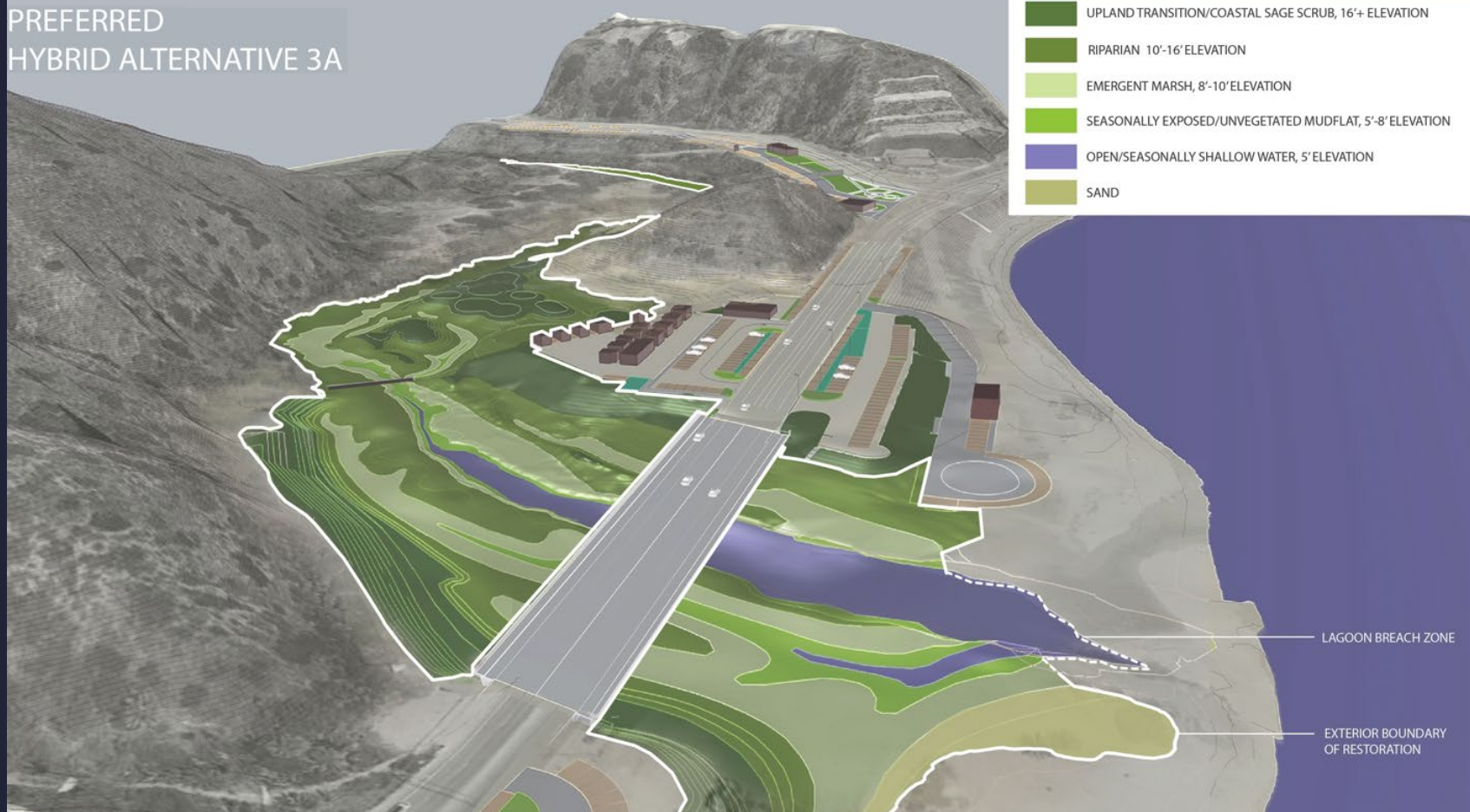
What words come to mind when you think of Topanga Lagoon, State Park, and/or Beach?

# **LAGOON RESTORATION & BRIDGE REPLACEMENT 60% DESIGN**



PREFERRED  
HYBRID ALTERNATIVE 3A

- UPLAND TRANSITION/COASTAL SAGE SCRUB, 16'+ ELEVATION
- RIPARIAN 10'-16' ELEVATION
- EMERGENT MARSH, 8'-10' ELEVATION
- SEASONALLY EXPOSED/UNVEGETATED MUDFLAT, 5'-8' ELEVATION
- OPEN/SEASONALLY SHALLOW WATER, 5' ELEVATION
- SAND

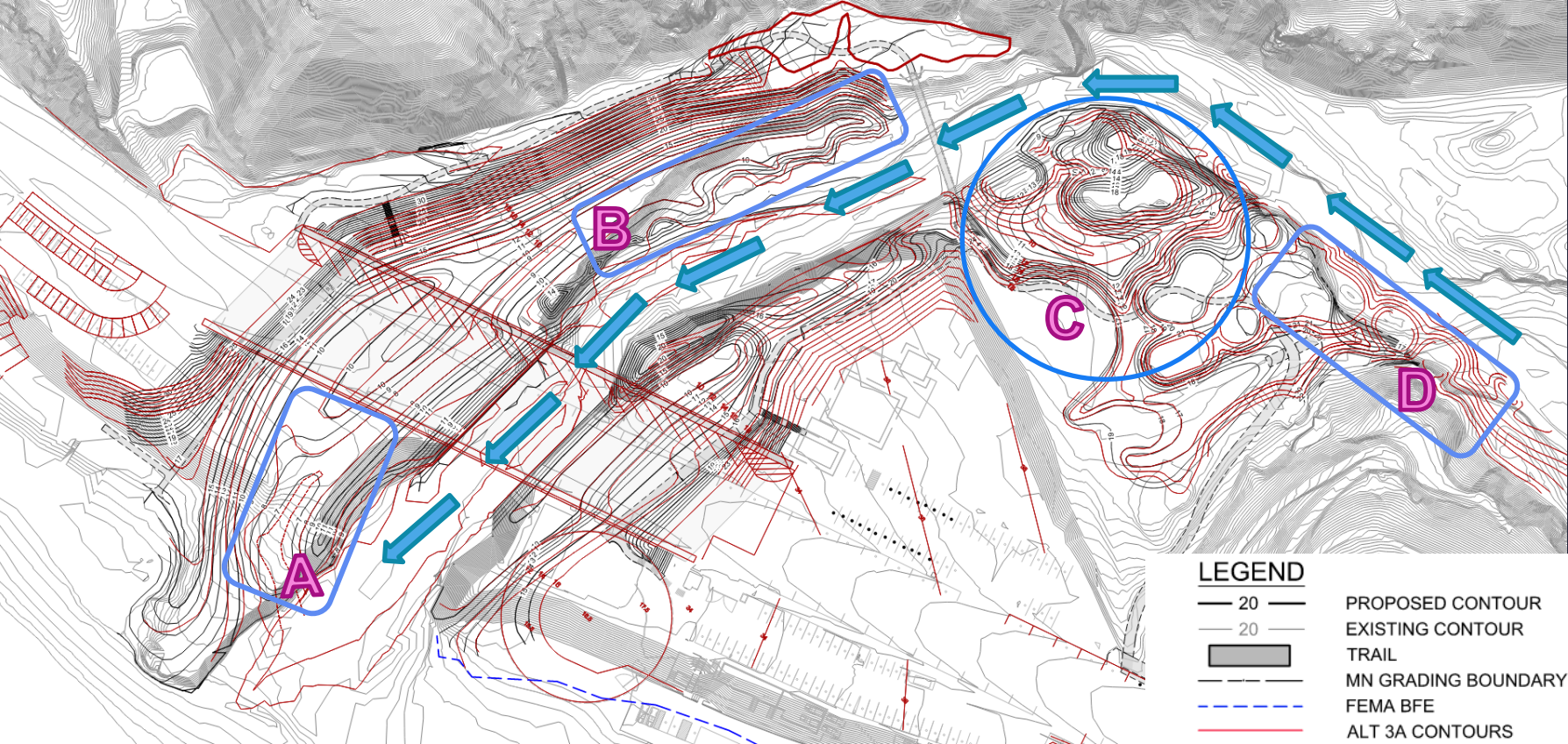


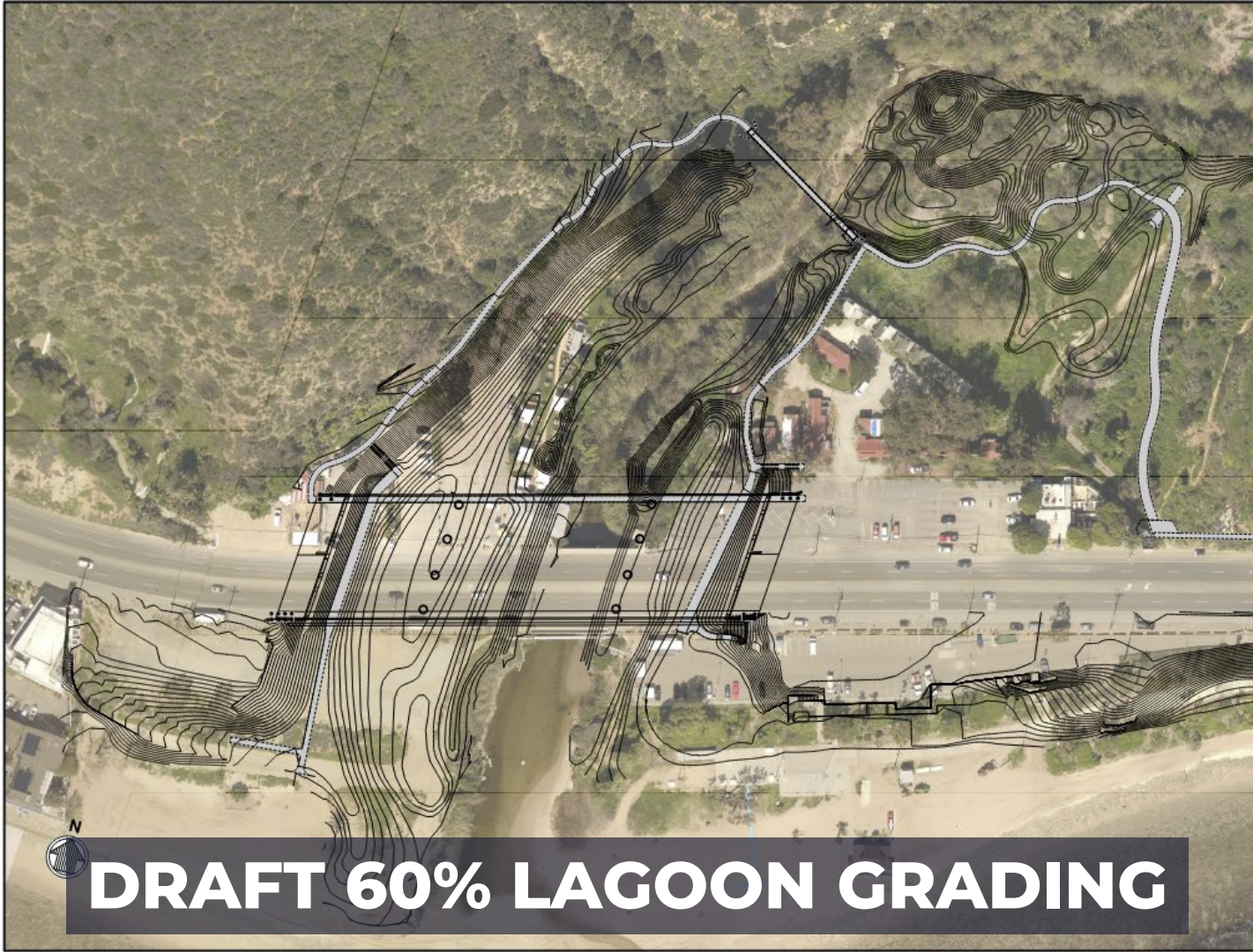
LAGOON BREACH ZONE

EXTERIOR BOUNDARY OF RESTORATION

**FEIR LAGOON GRADING (9/2024)**

# LAGOON GRADING: CHANGES SINCE FEIR

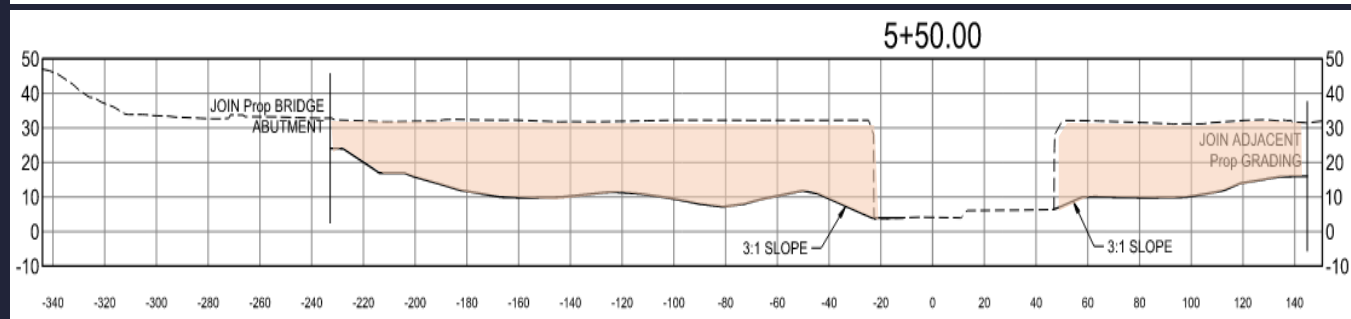
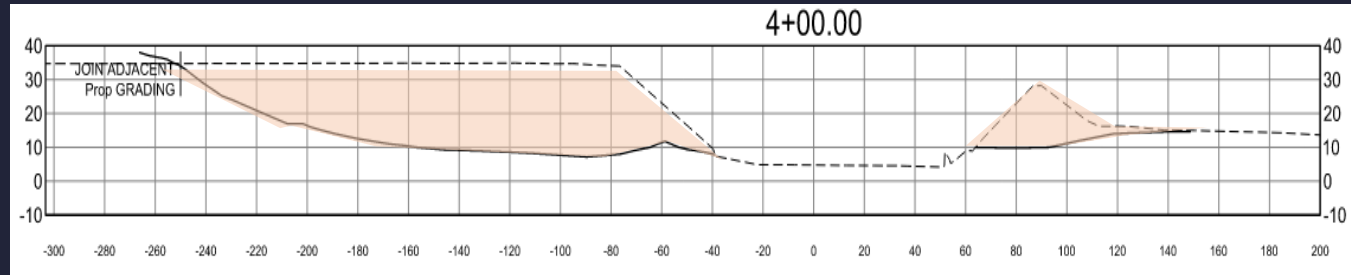
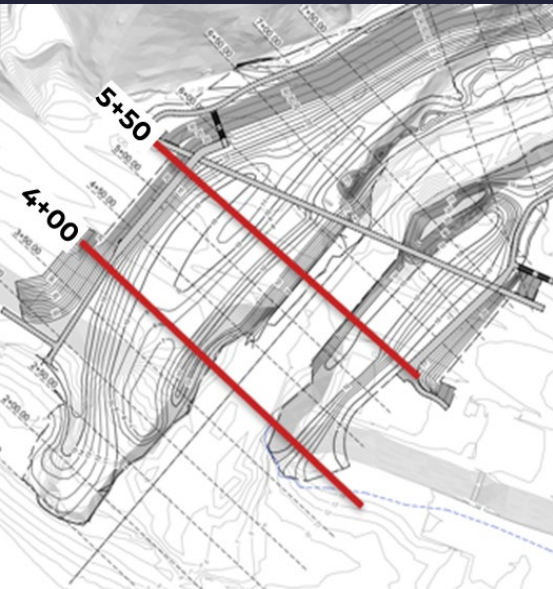




**DRAFT 60% LAGOON GRADING**



# EXISTING & FUTURE CROSS SECTIONS



# SEA LEVEL RISE ANALYSIS & DESIGN

**TABLE 11. Sea Level Scenarios for Santa Monica.**

Median values of Sea Level Scenarios, in feet, for each decade from 2020 to 2150, with a baseline of 2000. All median scenario values incorporate the local estimate of vertical land motion.

YEAR	LOW	INT-LOW	INTERMEDIATE	INT-HIGH	HIGH
2020	0.2	0.2	0.2	0.2	0.2
2030	0.3	0.3	0.4	0.4	0.4
2040	0.3	0.4	0.5	0.6	0.7
2050	0.4	0.6	0.7	0.9	1.2
2060	0.5	0.7	1.0	1.5	1.9
2070	0.6	0.9	1.3	2.1	2.8
2080	0.6	1.0	1.7	2.9	3.9
2090	0.7	1.2	2.3	3.7	5.2
2100	2105	1.4	2.9	4.6	6.4
2110		1.6	3.6 3.3	5.5 5.0	7.7 7.0
2120	0.9	1.8	4.2	6.2	8.8
2130	0.9	1.9	4.7	6.8	9.7
2140	1.0	2.1	5.2	7.3	10.6
2150	1.1	2.3	5.7	7.9	11.5

## ANALYZE

- Int, Int-high, High

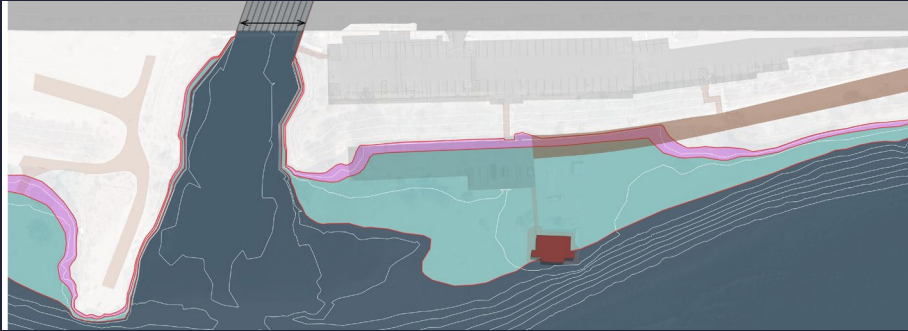
## DESIGN

- Int, Int-high

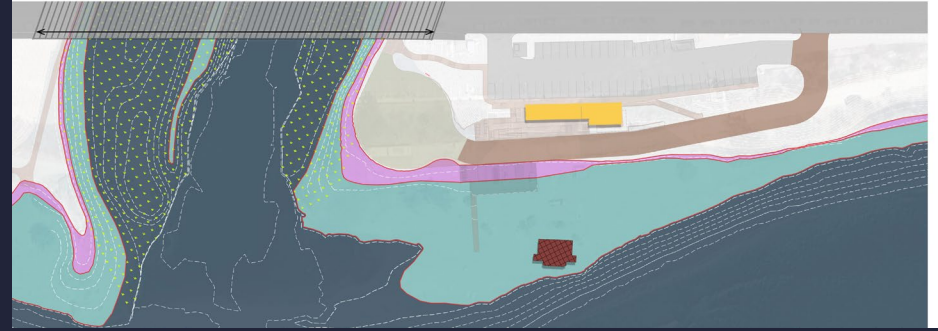
## BUILD: 2030

- 2060 for 30-yr Service Life
- 2080 for 50-yr Service Life
- 2105 for 75-yr Service Life

# SEA LEVEL RISE



Sea Level Rise Modeling  
with Existing Conditions



Sea Level Rise Modeling  
with Proposed Project

## LEGEND

### ELEVATION INTERMEDIATE-HIGH SCENARIOS

15.7'	5' Sea Level Rise (year 2105)
14.4'	3.3' Sea Level Rise (year 2085)
11'	No Sea Level Rise

WETLAND/EMERGENT MARSH

HIGHWAY

BRIDGE

PARKING

BEACH ACCESS ROAD

PEDESTRIAN WALKWAY

BUILDING



# BRIDGE DESIGN

An aerial photograph of a concrete bridge spanning a river. The bridge has two main spans supported by a central pier. On the left bank, there is a parking lot with several cars and a building. On the right bank, there are more buildings, a parking lot, and a sandy area with some trees. The background shows a hilly, wooded area.

## BRIDGE DESIGN

- Bridge
- Length, Width
- Bicycles
- Sidewalk
- Lighting

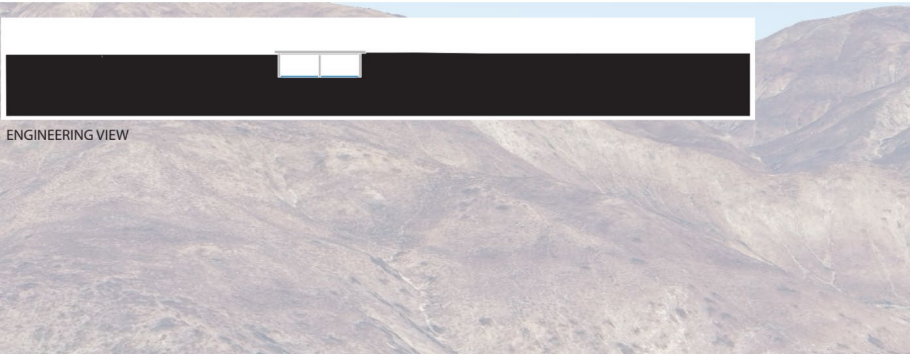
## BRIDGE AESTHETICS

- Concrete Color
- Bridge Rail
- Concrete Formliner

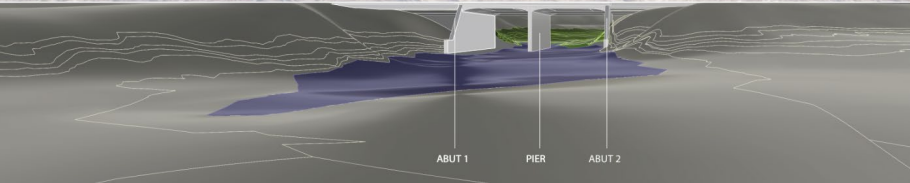
# BRIDGE VISUALIZATION

SCHEMATIC VISUALIZATION OF 80' LONG EXISTING TOPANGA BRIDGE

05/30/26



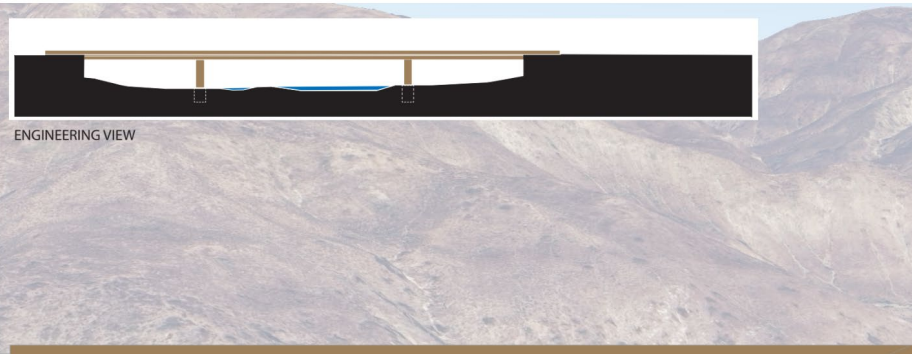
ENGINEERING VIEW



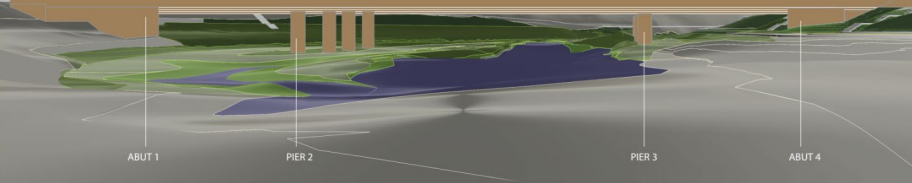
Current Bridge and  
Lagoon

SCHEMATIC VISUALIZATION OF 440' LONG TOPANGA BRIDGE

05/30/26



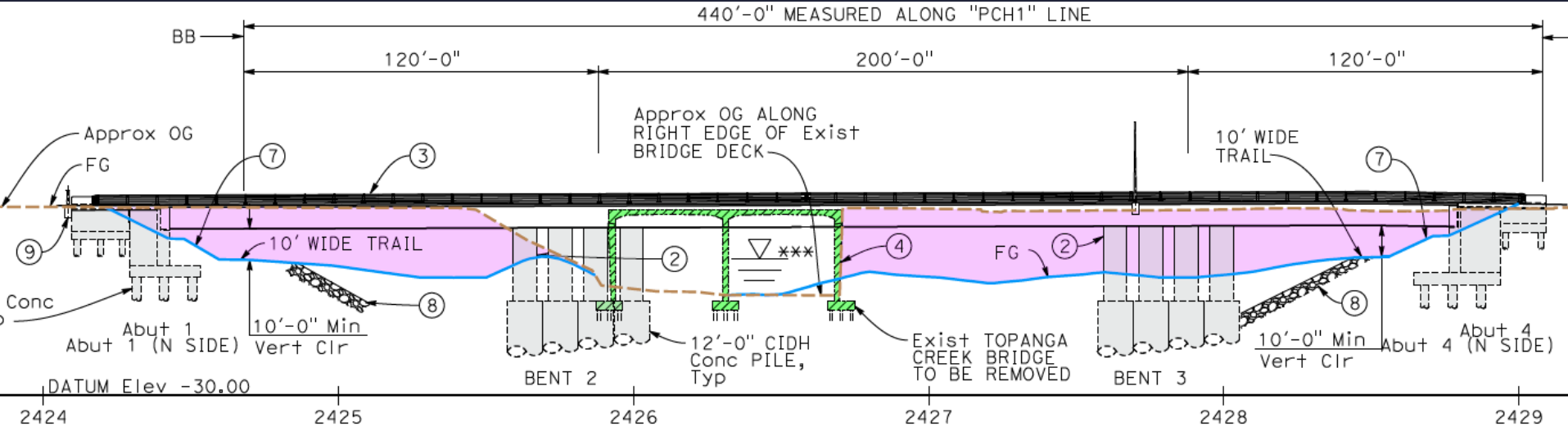
ENGINEERING VIEW



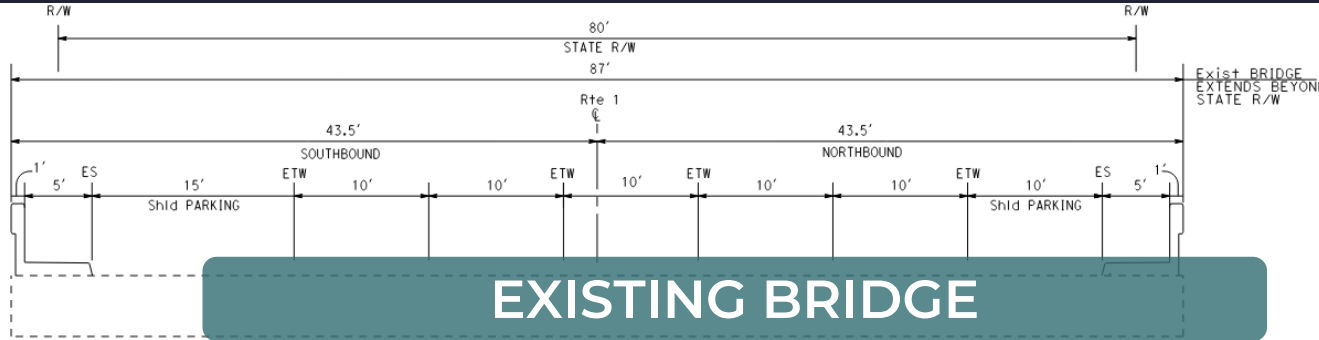
Replacement Bridge &  
Restored Lagoon

# BRIDGE DESIGN – BRIDGE LENGTH

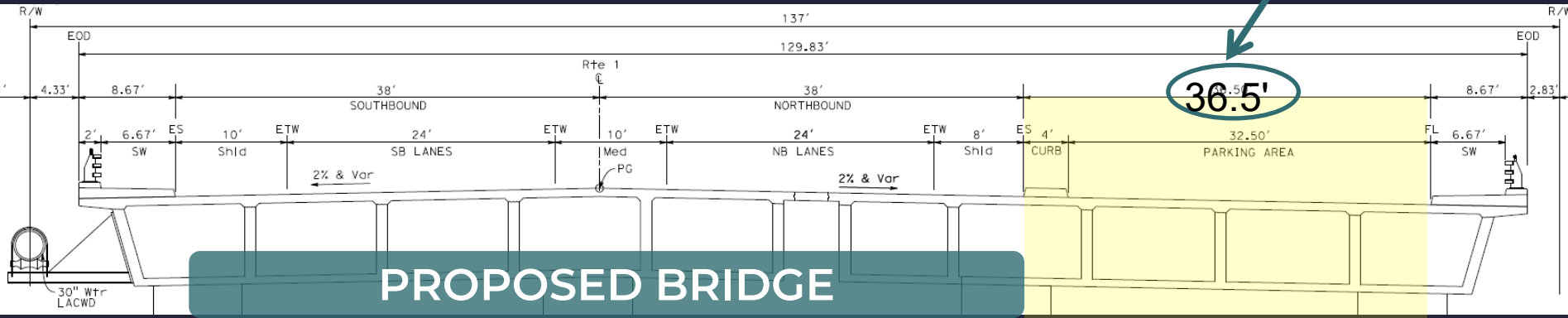
- Existing Bridge Length = 79'
- Proposed Bridge Length = 440'
- Area to Be Excavated in Pink



# BRIDGE DESIGN – BRIDGE WIDTH



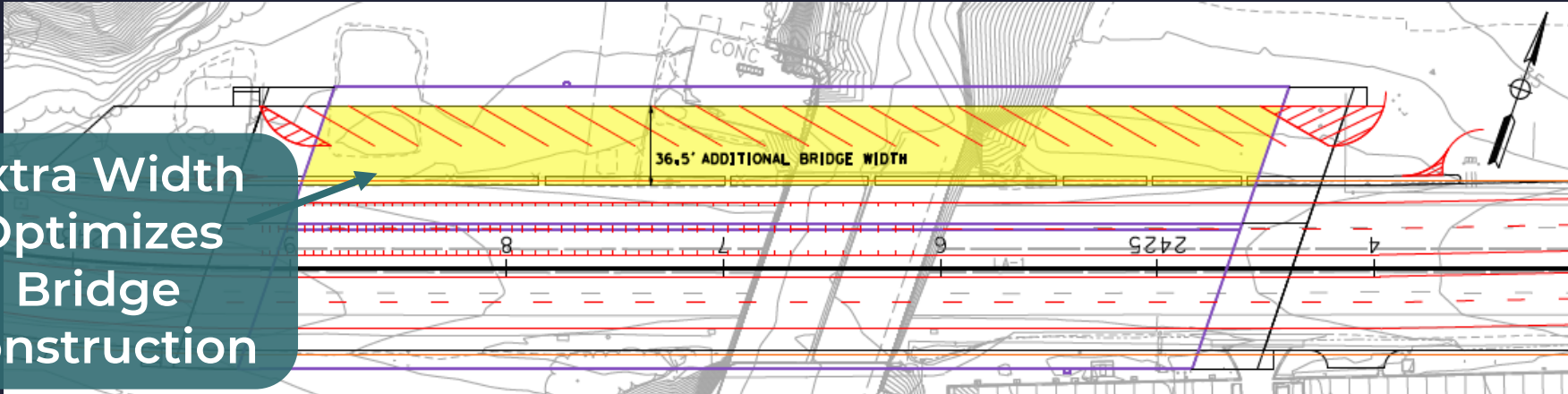
Extra Width  
Optimizes  
Bridge  
Construction  
& Parking



# BRIDGE DESIGN – BRIDGE WIDTH

- Additional Widths - Supports Traffic During SB Construction
- Creates Additional Parking

Extra Width  
Optimizes  
Bridge  
Construction



Traffic Diverted to  
Widened Portion During  
SB Bridge Construction

# BRIDGE DESIGN – SIDEWALK

- Sidewalk on Existing Bridge
- Additional Sidewalk Proposed: N side PCH, From Bridge to SR-27



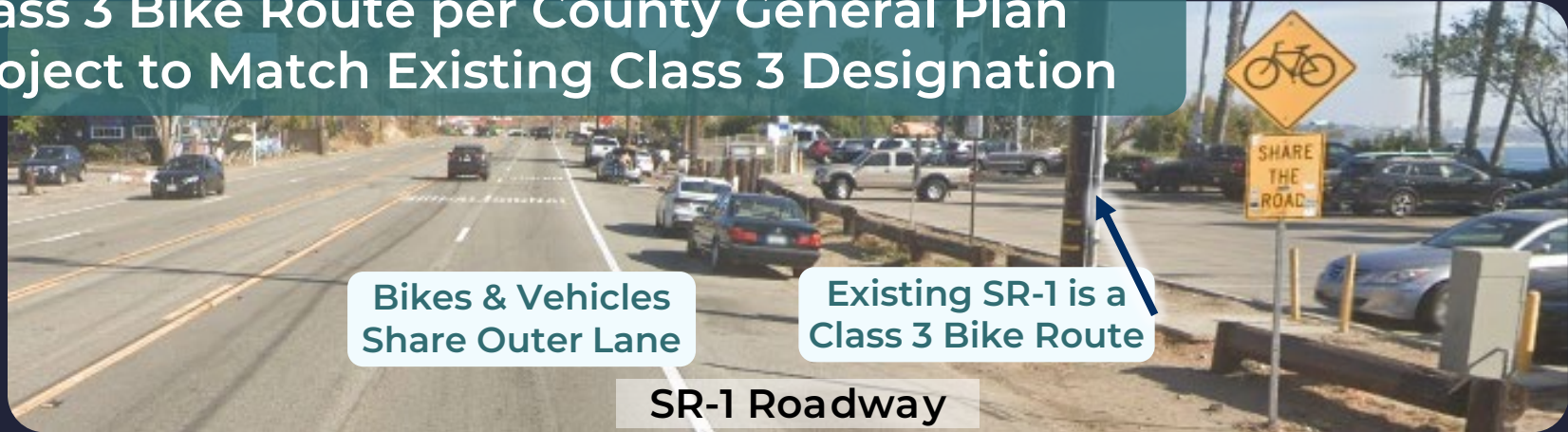
SR-1 Bridge



SR-1 Roadway

# BRIDGE DESIGN – BICYCLES

Class 3 Bike Route per County General Plan  
Project to Match Existing Class 3 Designation



Bikes & Vehicles  
Share Outer Lane

Existing SR-1 is a  
Class 3 Bike Route

SR-1 Roadway



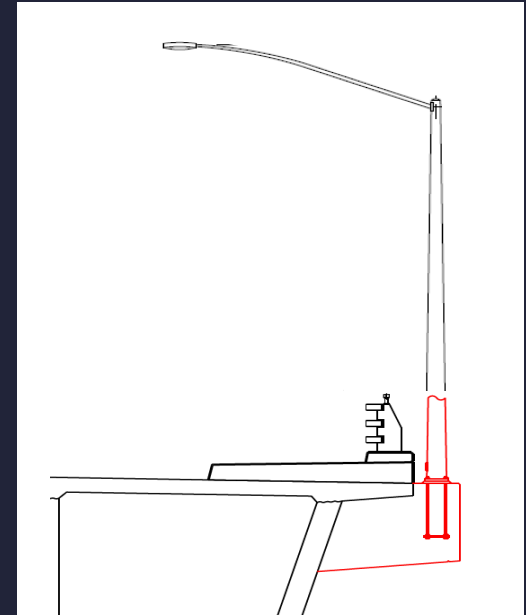
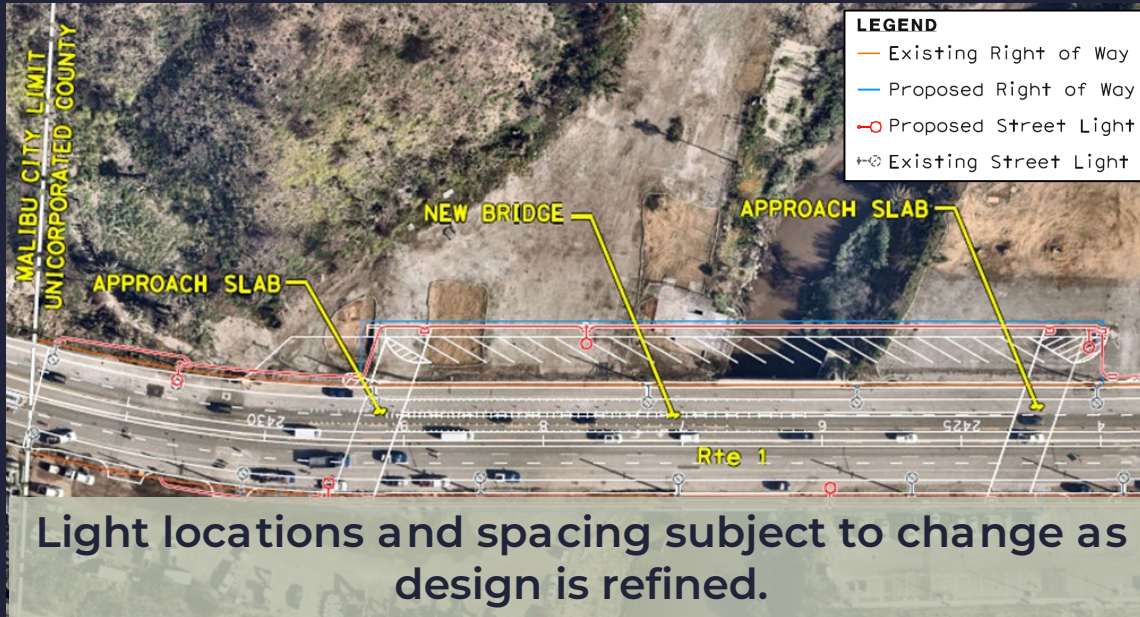
Bikes & Vehicles  
Share Outer Lane

SR-1 Bridge

Source: Google Street View

# BRIDGE DESIGN – LIGHTING

- Public Safety and Night Sky Protection
- Lighting Limited: One light each side, avoids creek spillover



# BRIDGE AESTHETICS



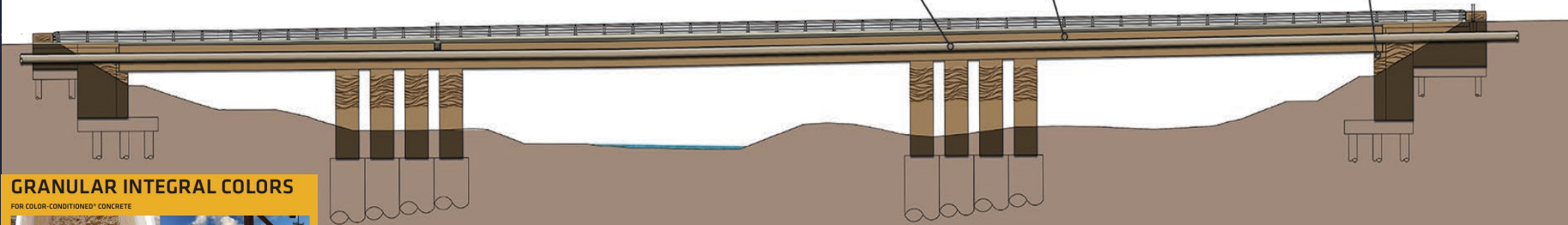
# BRIDGE AESTHETICS – CONCRETE COLOR

INTEGRAL CONCRETE  
COLOR: Sand Brown

Bridge Girder  
Integral Color

Abutment Wall  
Integral Color

30" Water Line



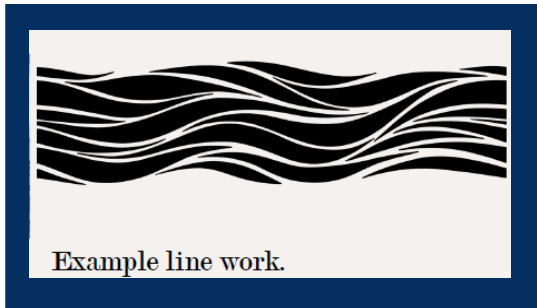
## GRANULAR INTEGRAL COLORS

FOR COLOR-CONDITIONED® CONCRETE



# BRIDGE AESTHETICS – CONCRETE FORMLINER

- Simple Wave Pattern Proposed for Columns & Wingwalls



Bridge Girder  
Integral Color

Abutment Wall  
Integral Color

30" Water Line

Column  
Treatment

Wingwall  
Treatment



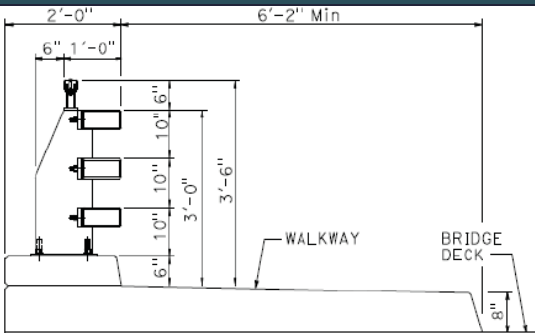
# BRIDGE AESTHETICS – BRIDGE RAIL

Standard Caltrans Rail  
Protects Views



Example: Rocky Creek Viaduct  
CA ST-75 (Without Sidewalk)

Proposed for This Project



CA ST-75SW (With Sidewalk)



Example: Rocky Creek Viaduct  
CA ST-75 (Without Sidewalk)

# MENTI QUESTION

What is your reaction to the proposed lagoon restoration vision?

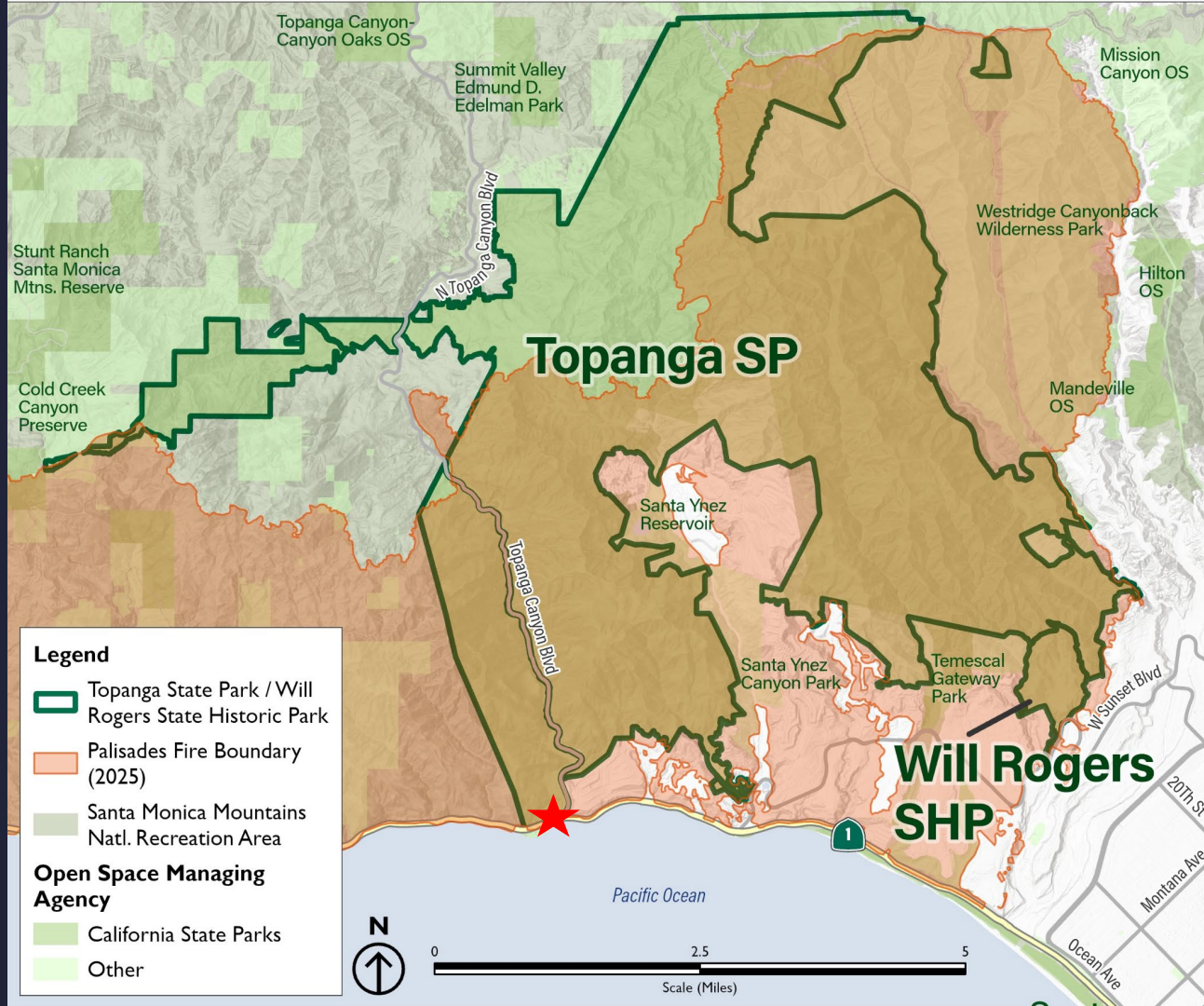
# MENTI QUESTION

Which benefit of lagoon restoration feels most important to you? (select 3)

# TOPANGA STATE PARK RECOVERY PLANNING



# AFTER THE FIRE: RECOVERY PLANNING



# RECOVERY JOURNEY



# ENGAGEMENT OPPORTUNITIES

## After the Fire:

Recovery Planning for Topanga  
State Park & Will Rogers State  
Historic Park

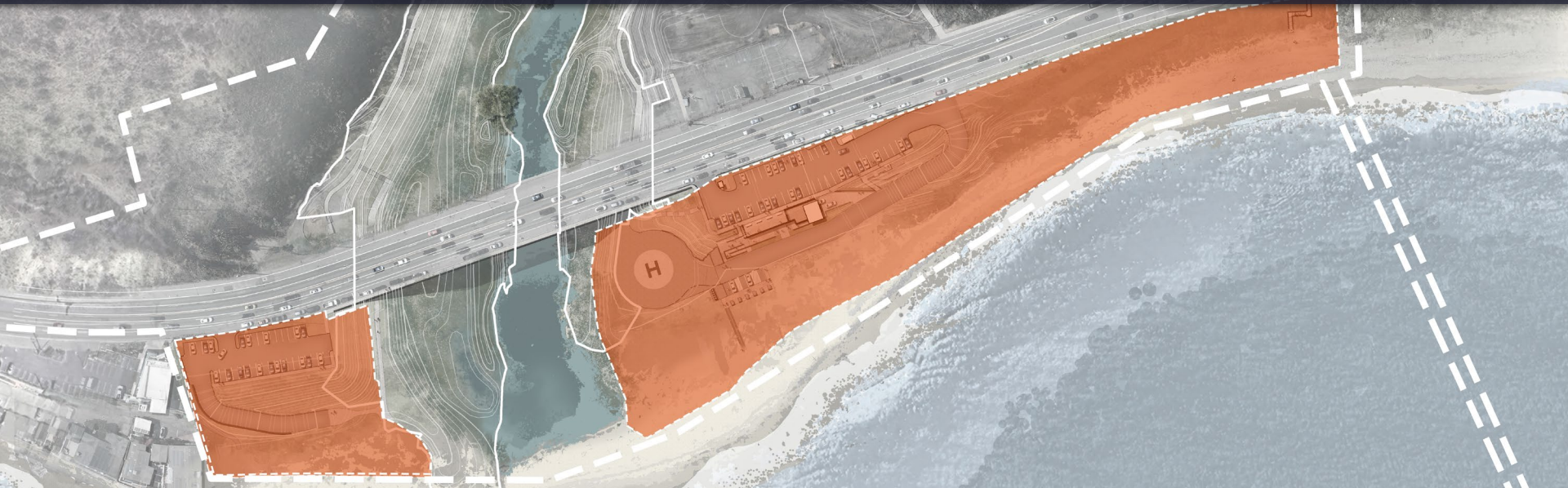


Scan the QR code to  
view the project  
website &  
stay informed about  
the planning process.

[www.myinput.com/  
topanga-will-rogers](http://www.myinput.com/topanga-will-rogers)



# TOPANGA BEACH VISITOR SERVICES 30% DESIGN



# EXISTING CONDITIONS

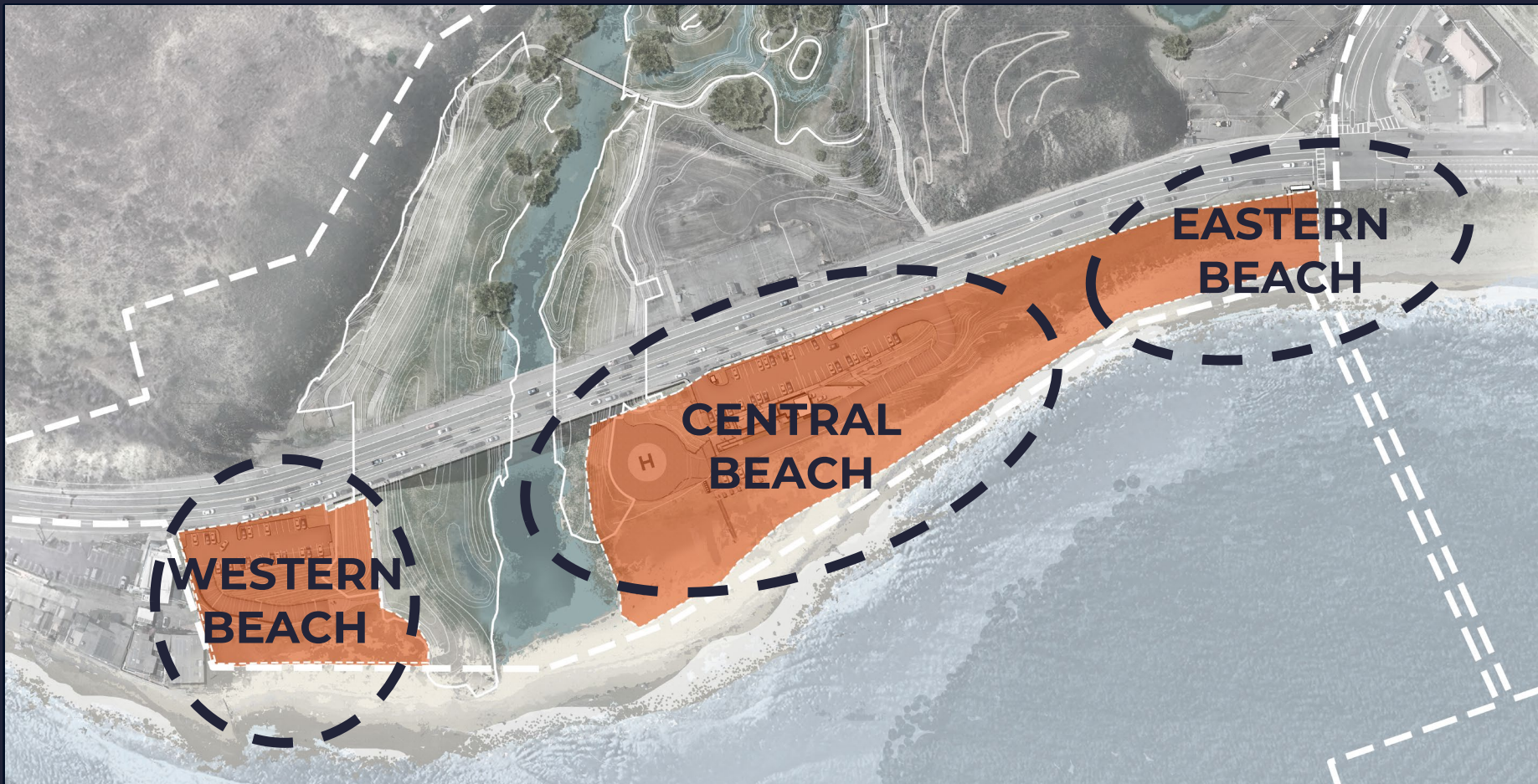


# PROJECT GOALS

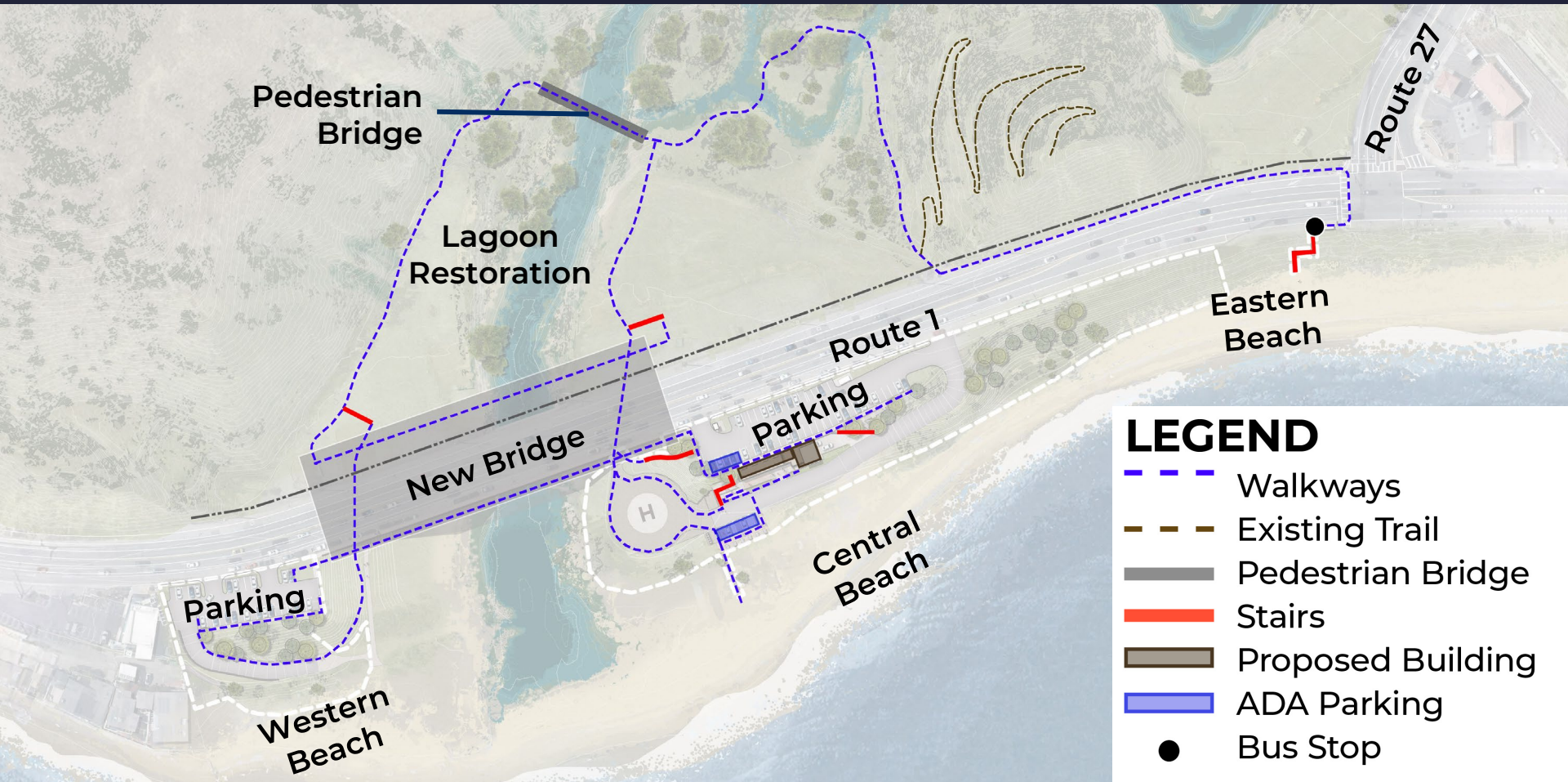
- Restore Coastal Lagoon Habitat
- Preserve Cultural Resources
- Enhance Coastal Access & Experience
- Improve Coastal Resilience



# BEACH AREAS



# TRAIL CONNECTIVITY



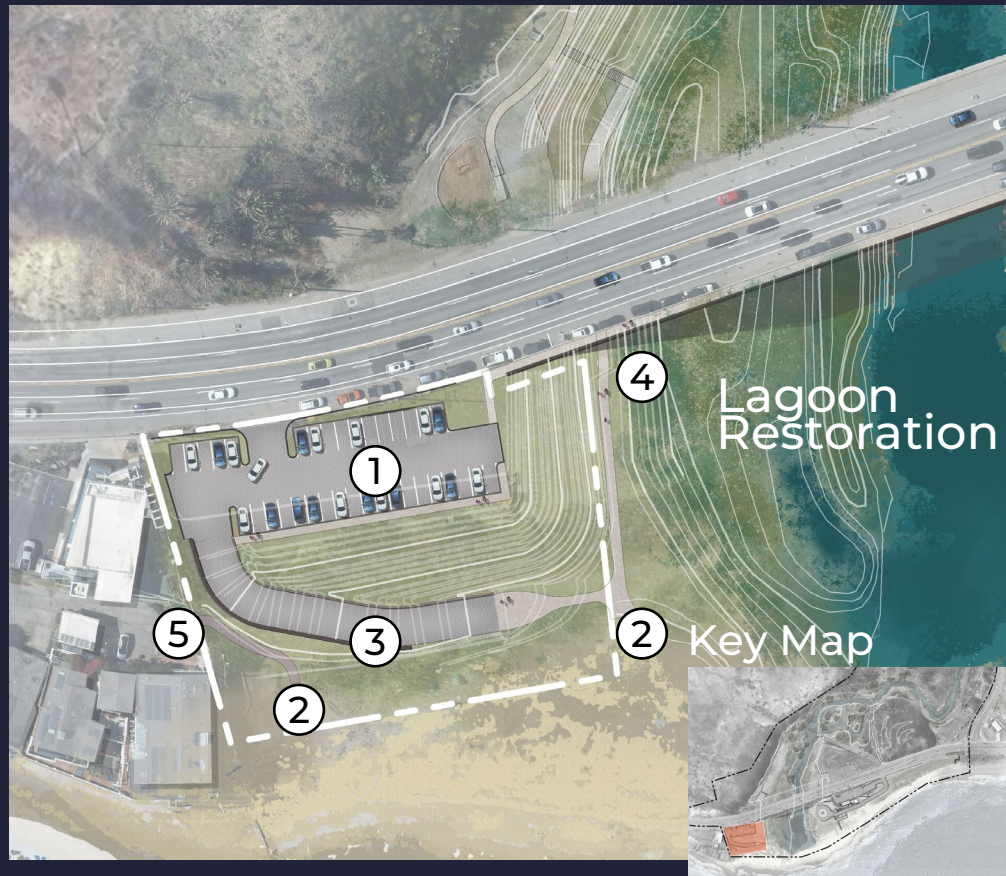
## LEGEND

-  Walkways
-  Existing Trail
-  Pedestrian Bridge
-  Stairs
-  Proposed Building
-  ADA Parking
-  Bus Stop

# WESTERN BEACH



- |   |                    |   |                                       |
|---|--------------------|---|---------------------------------------|
| 1 | Parking            | 4 | Connection to Topanga State Park      |
| 2 | Beach Access       | 5 | Maintained Access to Residential Area |
| 3 | Maintenance Access |   |                                       |



# WESTERN BEACH ACCESS

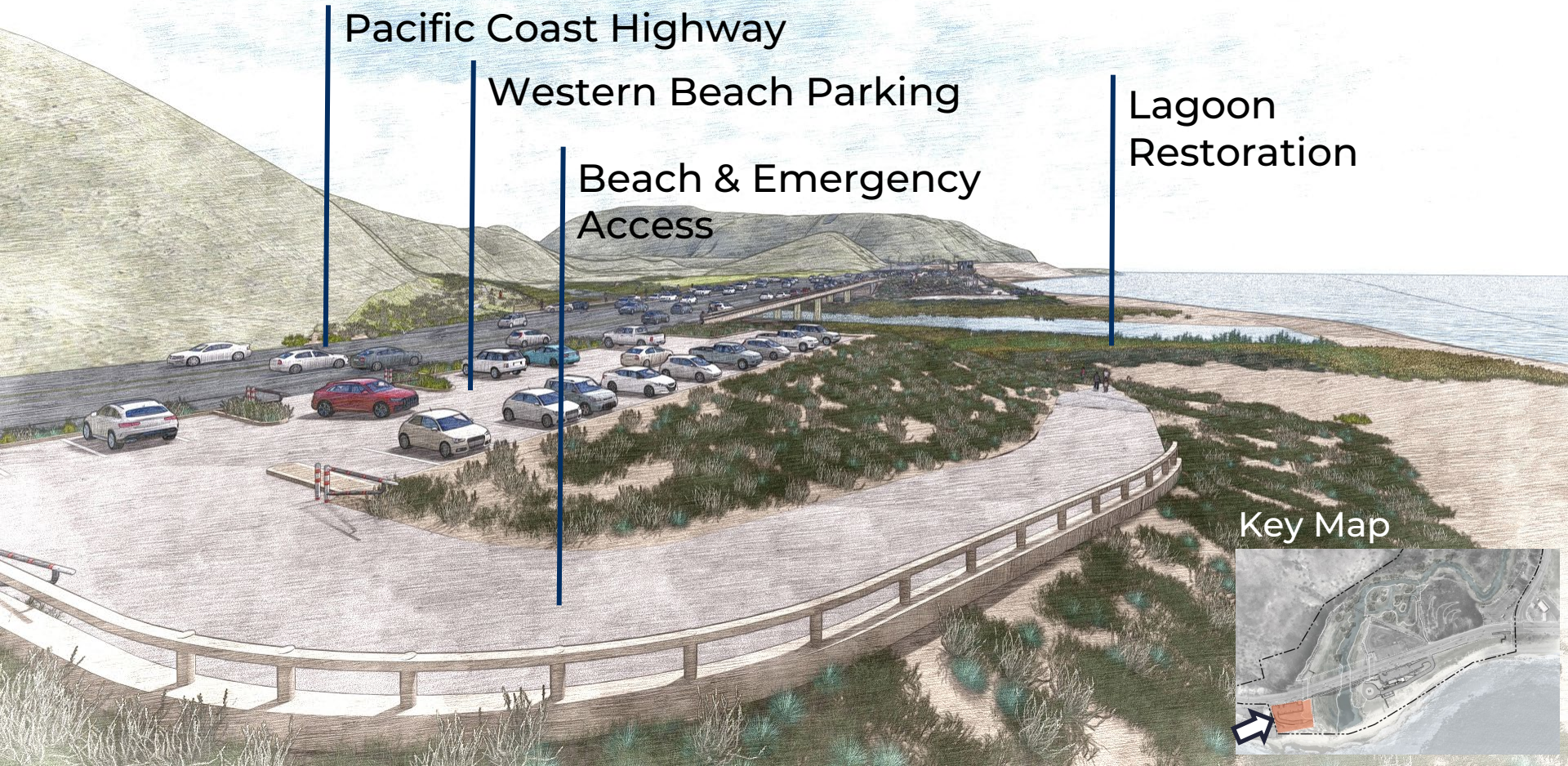
Pacific Coast Highway

Western Beach Parking

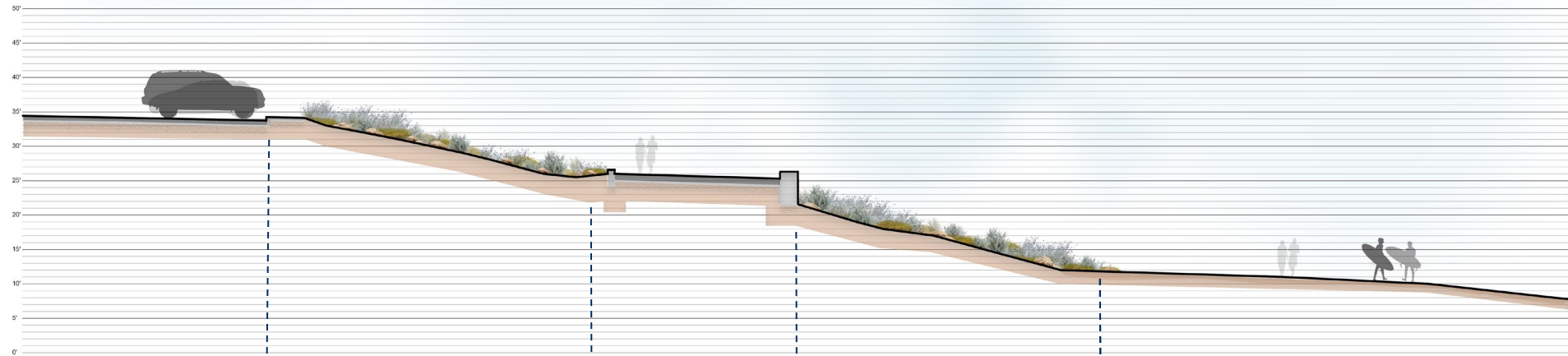
Beach & Emergency  
Access

Lagoon  
Restoration

Key Map



# WESTERN BEACH ACCESS



Western  
Beach  
Parking

Restored  
Slope

Beach &  
Emergency  
Access

Restored  
Slope

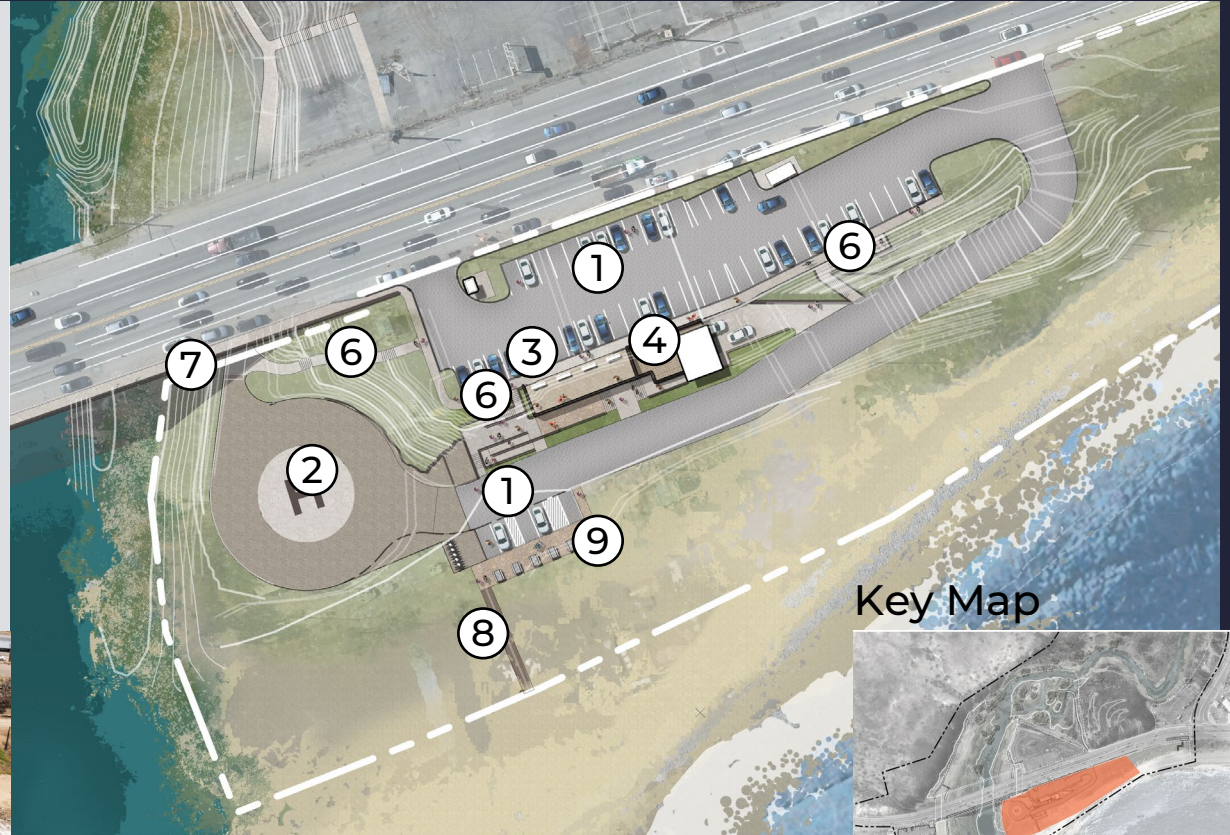
Existing Beach

Key Map



# CENTRAL BEACH VISITOR SERVICES

- 1 Parking
- 2 Helipad
- 3 Restrooms
- 4 Lifeguard Tower
- 5 Enhanced Bus Stop
- 6 Beach Access Stair
- 7 Connection to Topanga State Park
- 8 Accessible Beach Access
- 9 Picnic Tables

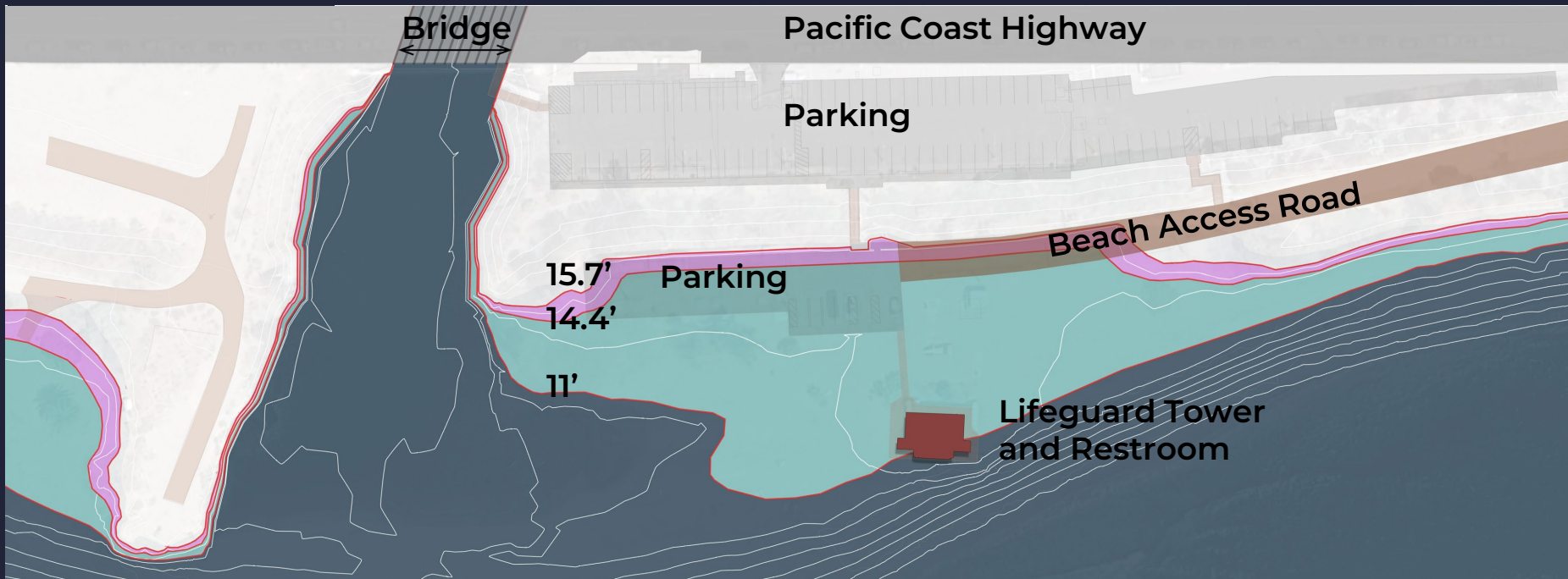


Key Map



# SEA LEVEL RISE

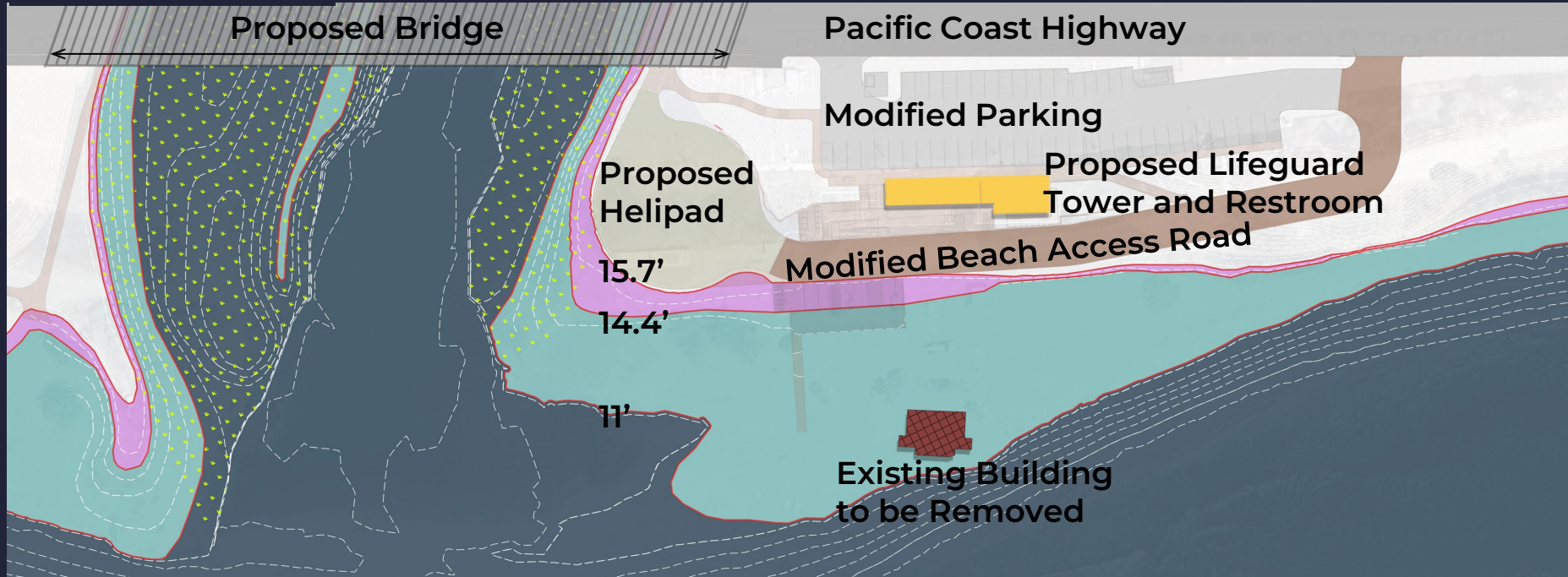
Existing Facilities



Elevation	Intermediate to High Scenarios
15.7'	5' Sea Level Rise (Year 2105)
14.4'	3.3' Sea Level Rise (Year 2085)
11.0'	No Sea Level Rise

# SEA LEVEL RISE

## Proposed Facilities

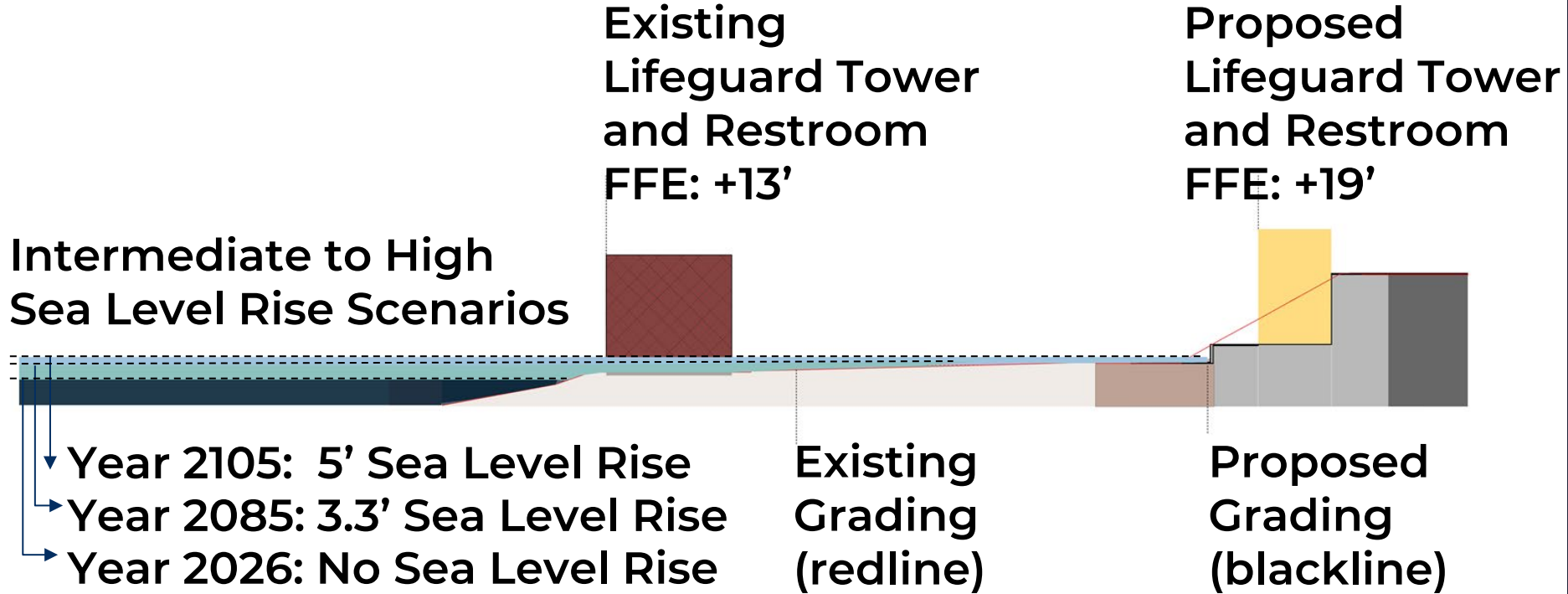


## Elevation Intermediate to High Scenarios

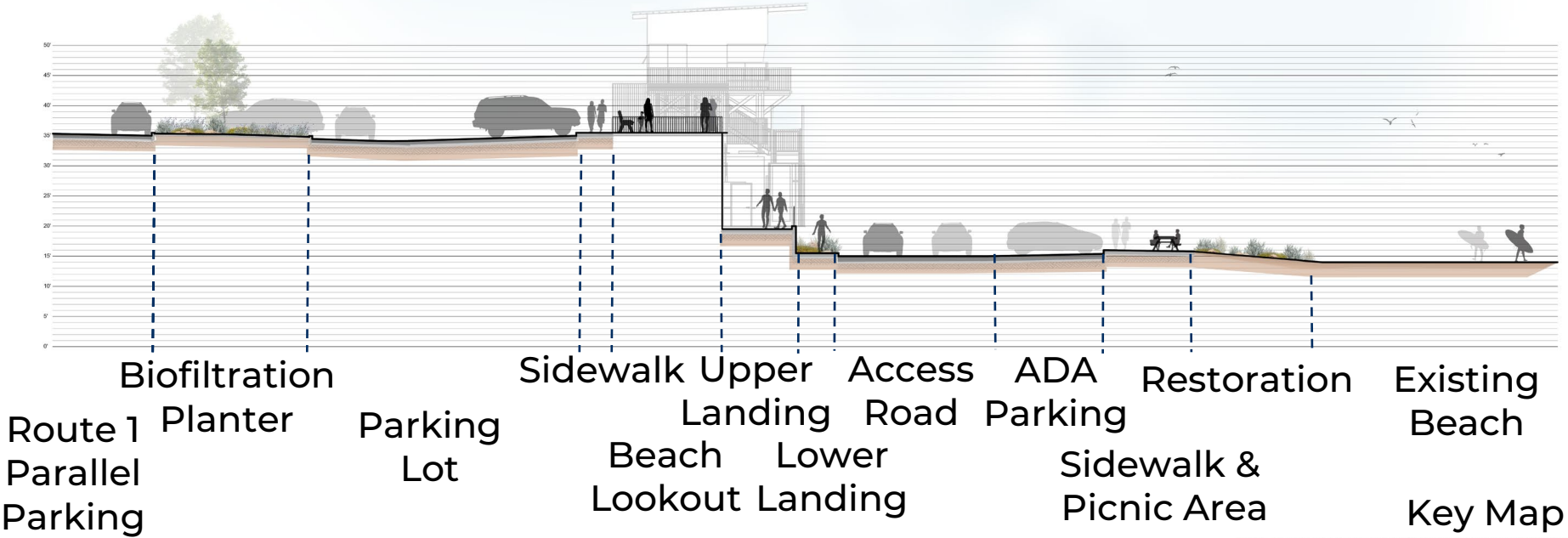
- 15.7' 5' Sea Level Rise (Year 2105)
- 14.4' 3.3' Sea Level Rise (Year 2085)
- 11.0' No Sea Level Rise

 Wetland/Emergent Marsh

# SEA LEVEL RISE



# CENTRAL BEACH VISITOR SERVICES

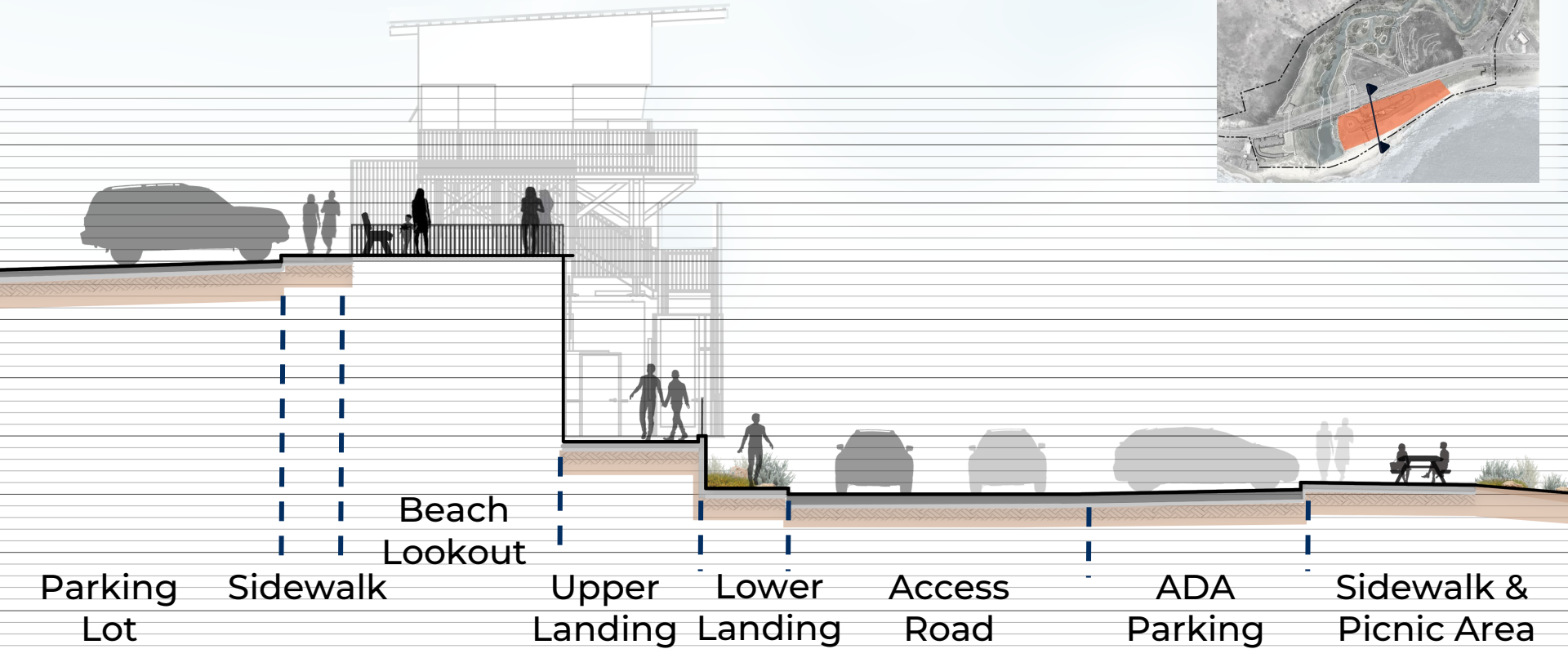


Key Map



# CENTRAL BEACH VISITOR SERVICES

Key Map



Parking Lot

Sidewalk

Beach Lookout

Upper Landing

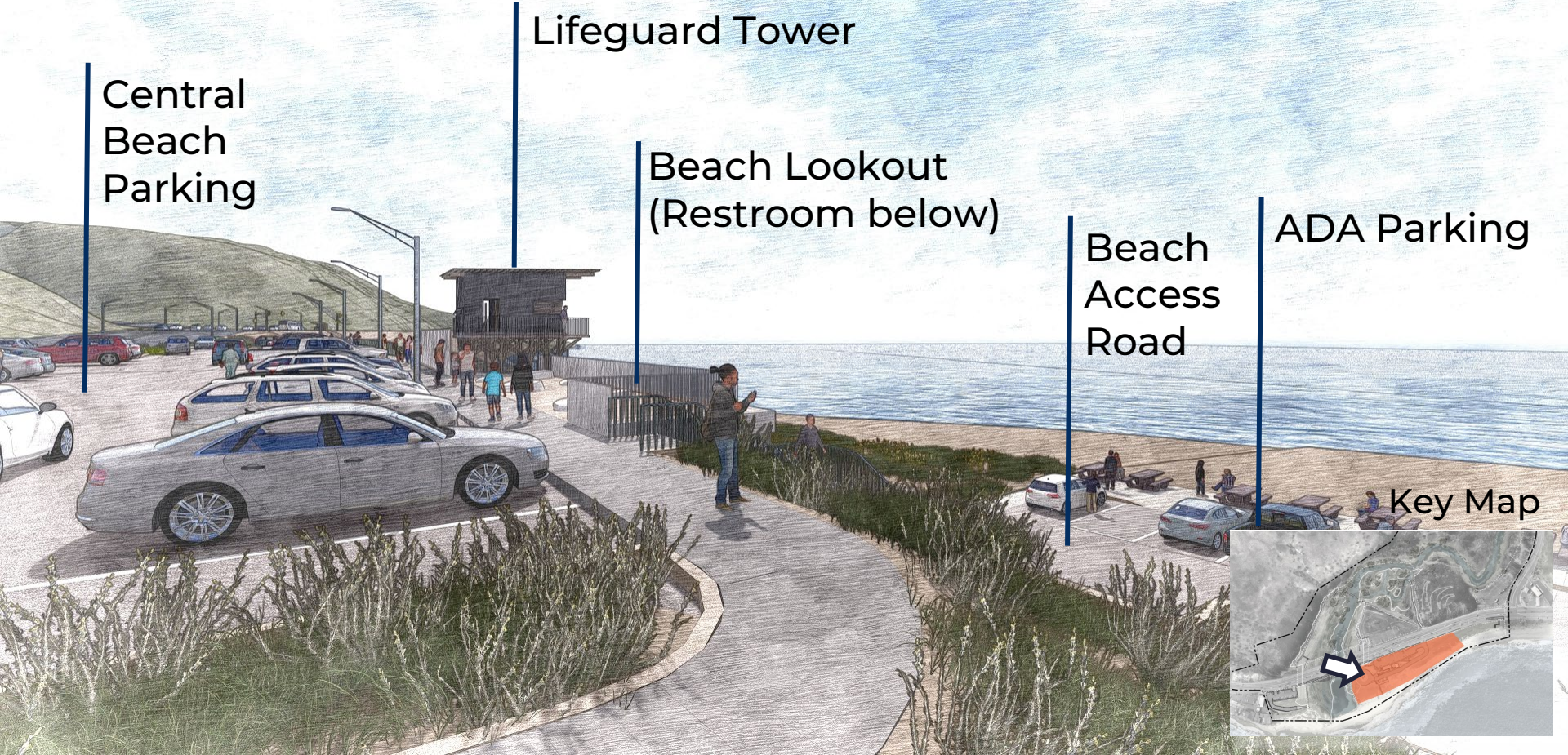
Lower Landing

Access Road

ADA Parking

Sidewalk & Picnic Area

# CENTRAL BEACH VISITOR SERVICES



Central  
Beach  
Parking

Lifeguard Tower

Beach Lookout  
(Restroom below)

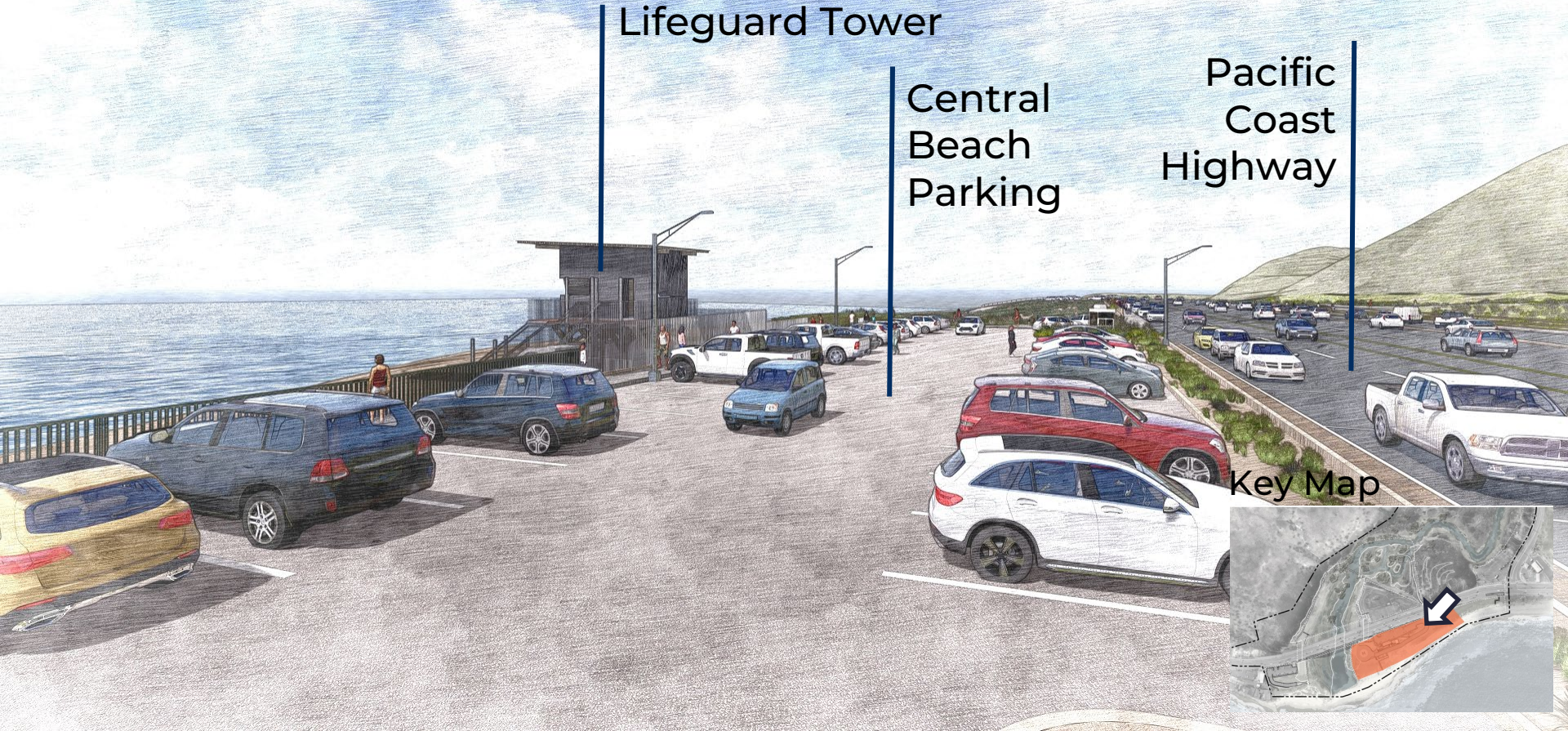
Beach  
Access  
Road

ADA Parking

Key Map



# CENTRAL BEACH VISITOR SERVICES



Lifeguard Tower

Central  
Beach  
Parking

Pacific  
Coast  
Highway

Key Map



# CENTRAL BEACH VISITOR SERVICES

Restrooms

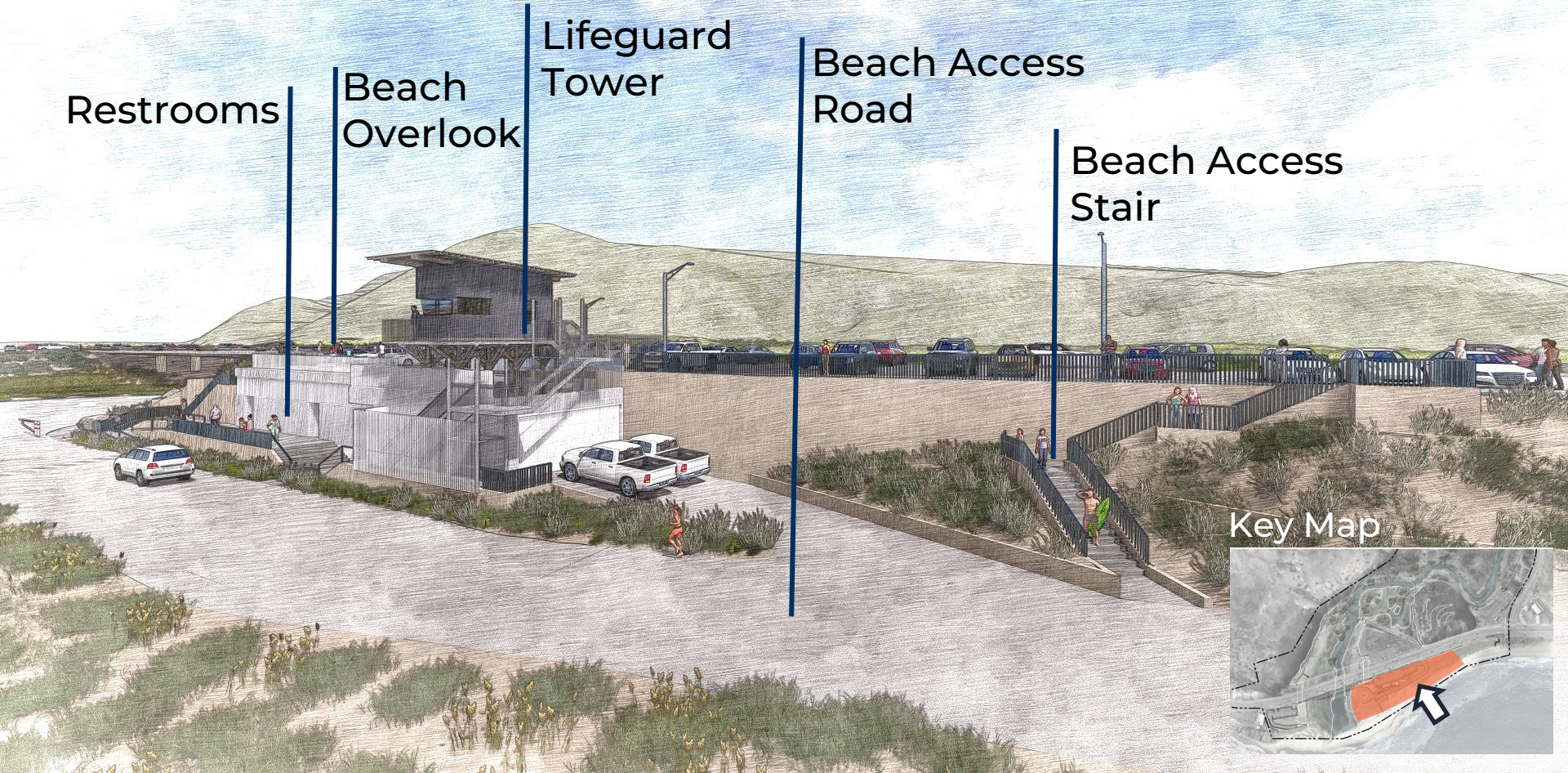
Beach  
Overlook

Lifeguard  
Tower

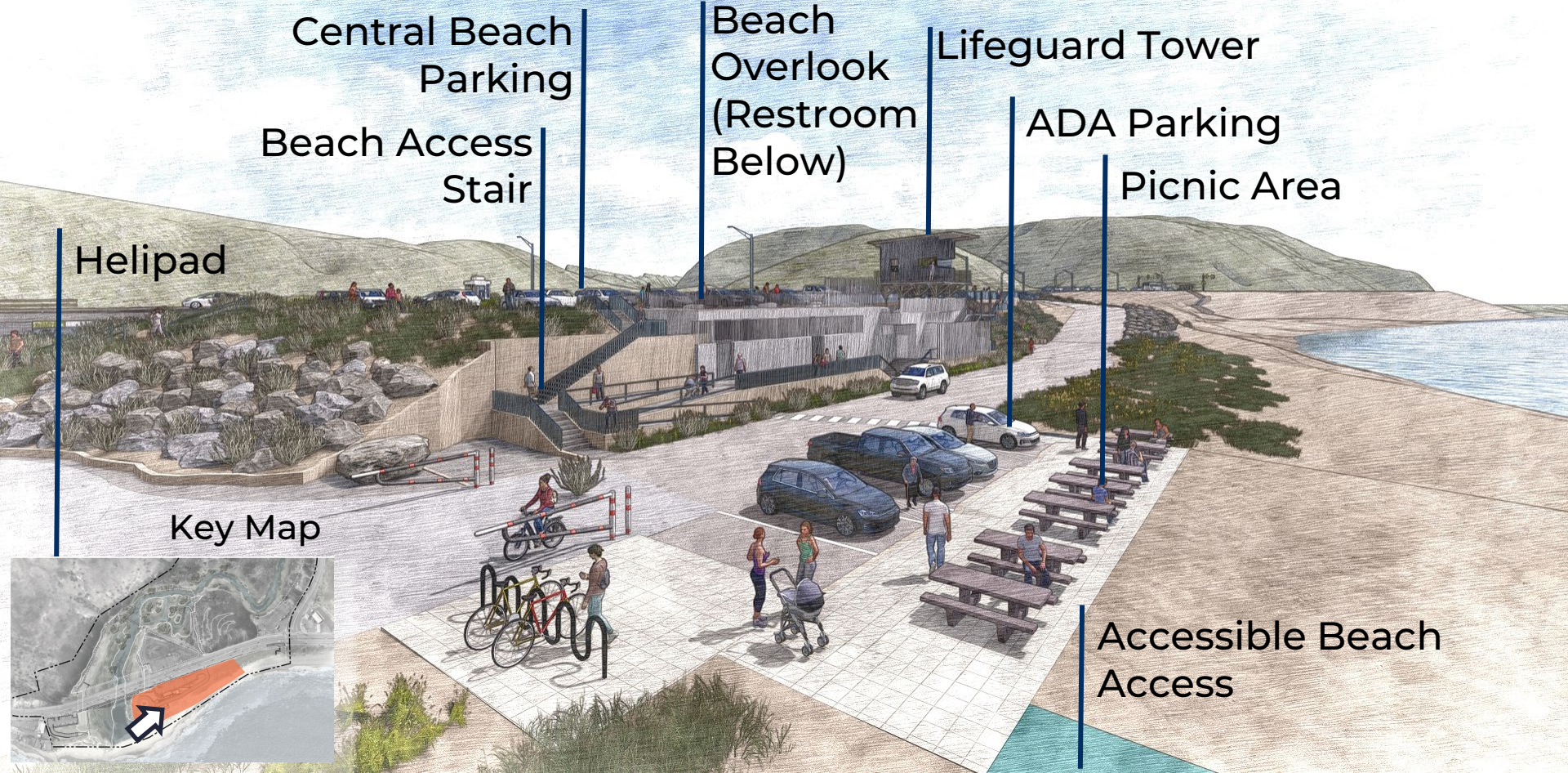
Beach Access  
Road

Beach Access  
Stair

Key Map



# CENTRAL BEACH VISITOR SERVICES



Central Beach  
Parking

Beach Access  
Stair

Beach  
Overlook  
(Restroom  
Below)

Lifeguard Tower

ADA Parking

Picnic Area

Helipad

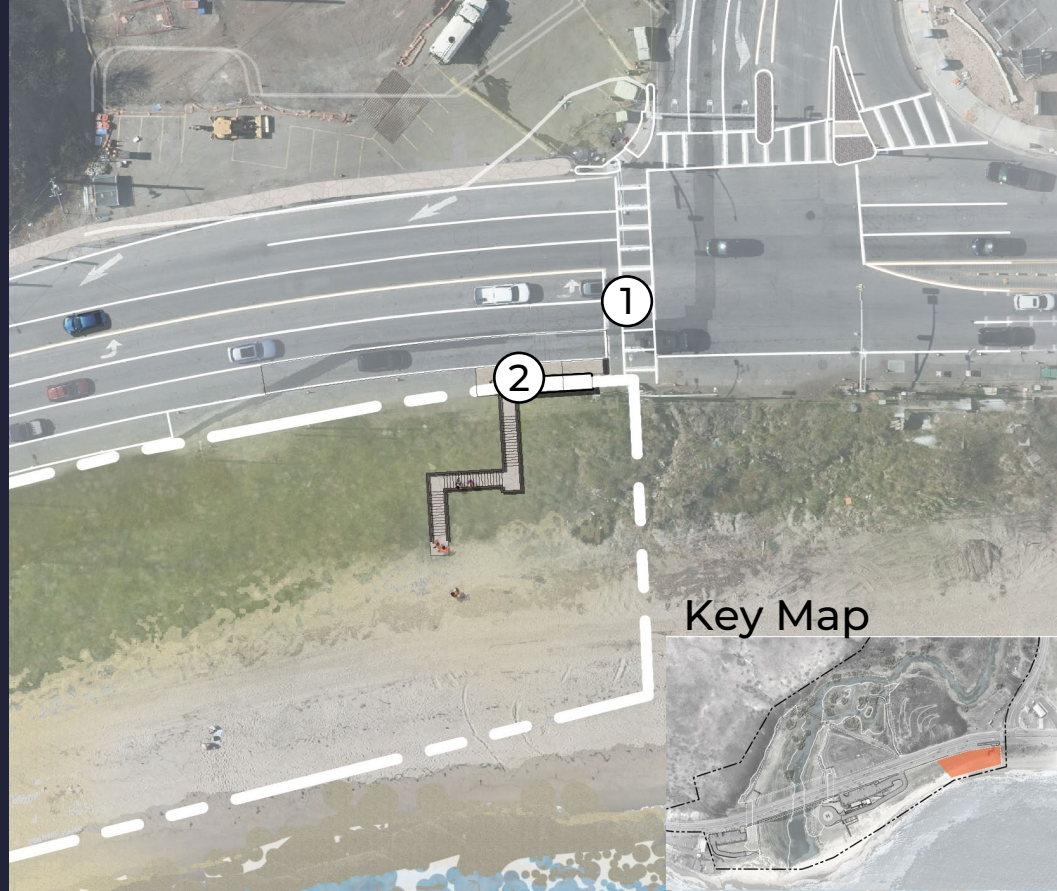
Key Map

Accessible Beach  
Access

# EASTERN BEACH ACCESS

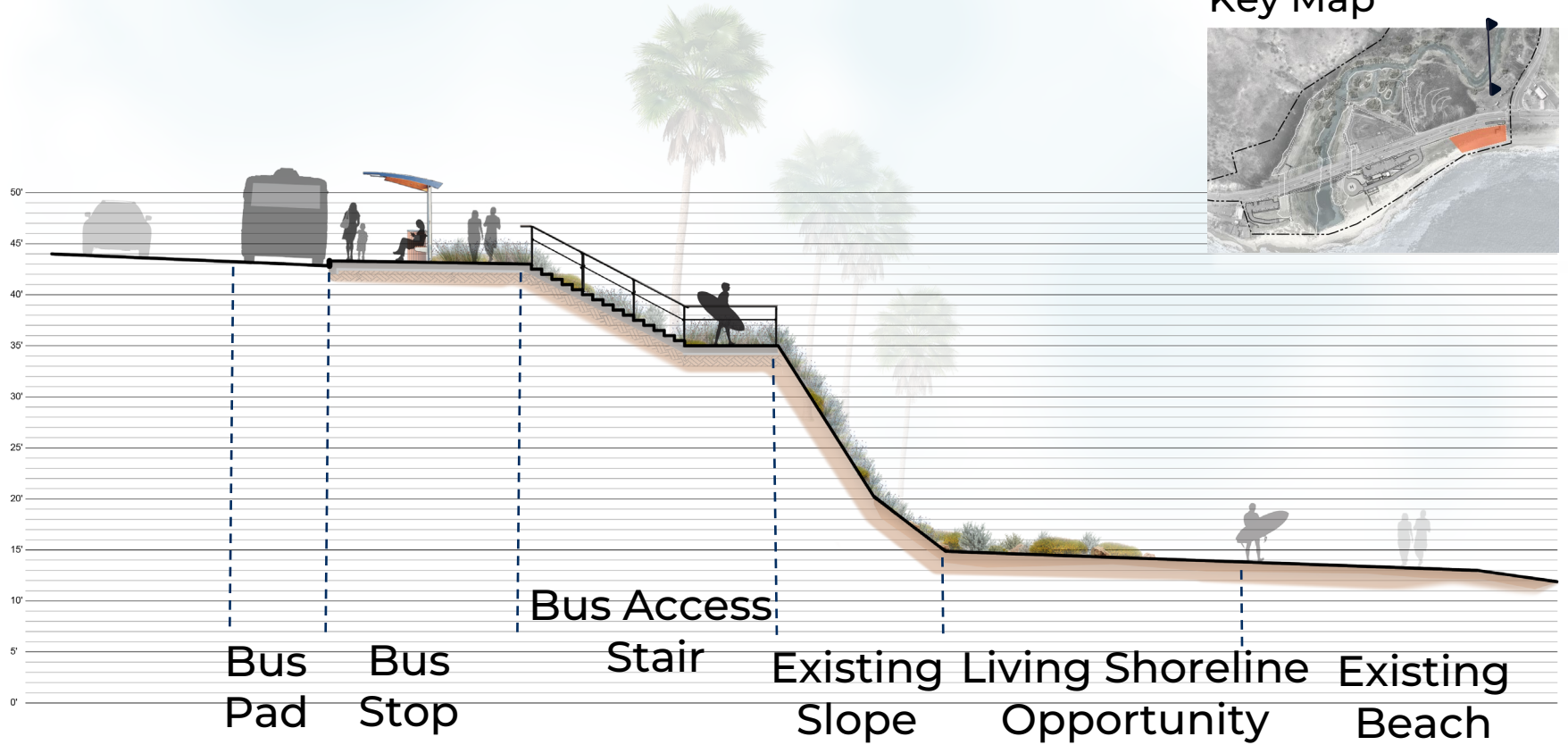


- 1 Enhanced Bus Stop
- 2 Stairs to Beach



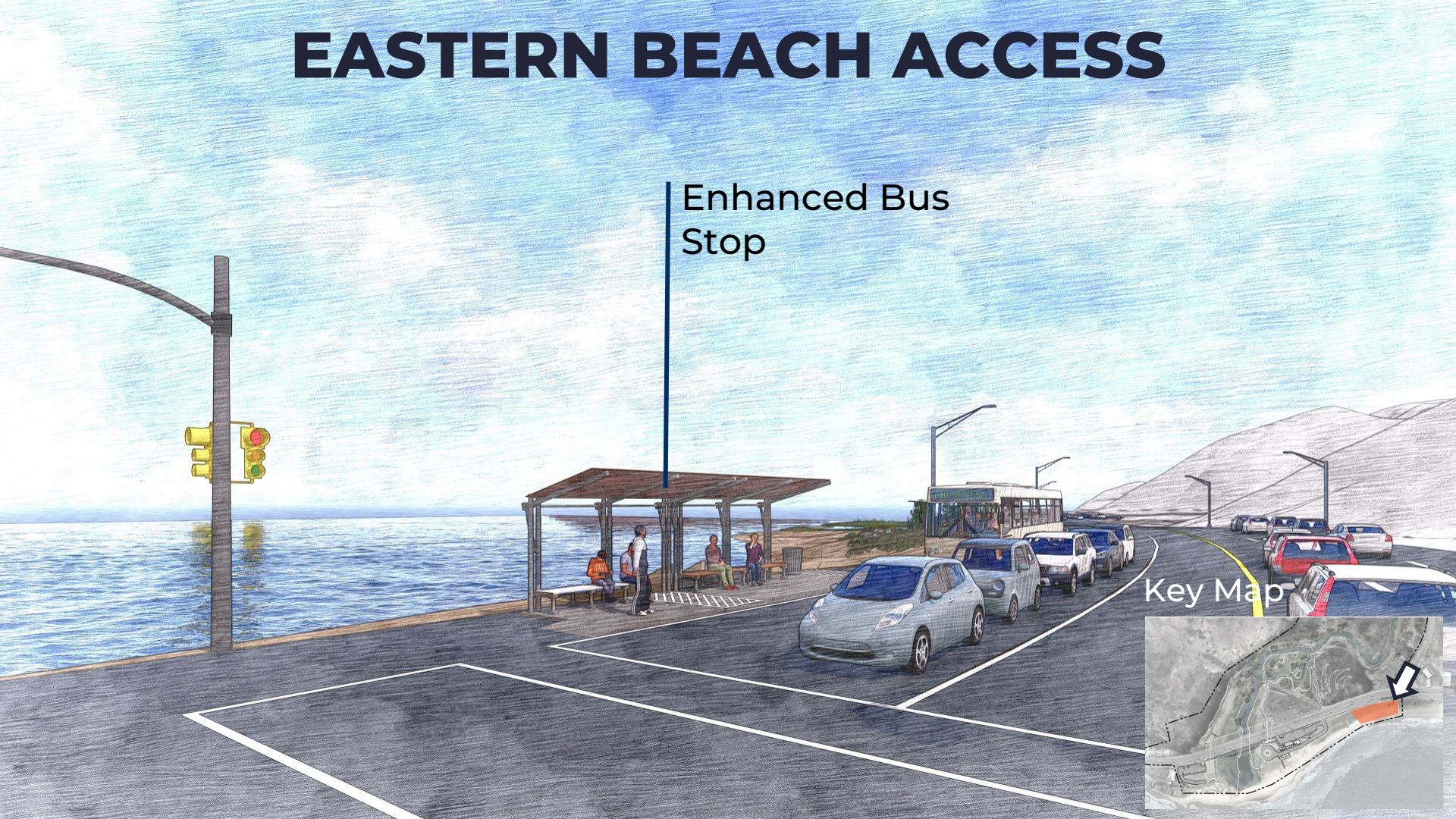
Key Map

# EASTERN BEACH ACCESS



# EASTERN BEACH ACCESS

Enhanced Bus  
Stop



Key Map



# 30% DESIGN

- 1 Parking
- 2 Helipad
- 3 Restrooms
- 4 Lifeguard Tower
- 5 Enhanced Bus Stop
- 6 Beach Access Stair

California State Parks

Pacific Coast Highway

LA County Department of Beaches & Harbors

Key Map



# NEXT STEPS

An aerial photograph of a coastal area. In the foreground, there is a sandy beach with some people and umbrellas. To the right of the beach is a large parking lot filled with cars. Further back, there are some buildings and a road. The background consists of large, brown, hilly mountains under a clear sky. The overall scene is a mix of natural and developed coastal land.

- Interpretive Design
- Living Shoreline Design Integration
- Advance Design and Documentation to 60%, 90% and 100%

# MENTI QUESTION

Based on what you've see, how well does the 30% Topanga Beach design align with your need to visit the beach?

A landscape photograph of a beach at dusk. The sky is a gradient of blue and purple, with a dark semi-transparent banner overlaid across the middle. The banner contains the word "QUESTIONS?" in large, white, bold, sans-serif capital letters. The foreground shows a sandy beach on the right and a calm body of water on the left, reflecting the sky. In the background, there are dark silhouettes of trees and hills.

**QUESTIONS?**

A wide, dark beach with driftwood and a blue sky with clouds. The foreground shows the texture of the sand and the gentle waves of the ocean. The middle ground is dominated by a dark, flat expanse of sand, likely due to low light or a specific type of sand. In the distance, there is a line of driftwood and a clear horizon under a bright blue sky with scattered white clouds.

**SHARE YOUR IDEAS STATIONS &  
BREAKOUT GROUPS**

# IN PERSON INSTRUCTIONS

## Around the Room

1. “Share Your Ideas” Stations
2. “Info” Stations

To help distribute participants, please start at your assigned “Share Your Ideas” and move sequentially through the stations.

Every 15 minutes, we will invite you to continue to the next station if you have not already done so.

If you finish early, you may move ahead to the next station or visit an Information Station at any time.

After approximately 45 minutes, we will reconvene as a full group to share key takeaways from each station.

# VIRTUAL INSTRUCTIONS

- Participants are assigned breakout groups where the activities and questions mirror the in-person activities
- Every 15 minutes, we will have the facilitators switch groups so you will have a chance to provide input for all 3 topics.
- If you have questions related to Lagoon Restoration, Bridge Aesthetics, or Post-fire Recovery, please ask your questions in the chat and responses will be provided.
- After approximately 45 minutes, we will reconvene as a full group to share key takeaways from each station.



# **BREAKOUT SESSIONS**

A scenic landscape featuring a river in the foreground, a dark semi-transparent banner in the middle, and hills in the background. The banner contains the text "BREAKOUT SESSIONS TAKEAWAYS" in white, bold, sans-serif font. The background shows a river with some debris, a dark banner, and a landscape with hills and trees under a blue sky.

# **BREAKOUT SESSIONS TAKEAWAYS**

# NEXT STEPS



# ANTICIPATED DESIGN SCHEDULE

- SPRING 2026:** Lagoon Restoration 60%, Topanga Beach 30%
- SUMMER 2026:** Parks Recovery Planning Starts
- WINTER 2026:** Topanga Beach 60%, Parks Recovery Plng Cont.
- SPRING 2027:** Lagoon Restoration / Topanga Beach 90%
- SUMMER 2027:** Parks Recovery Planning Complete,  
Design Schedule TBD
- WINTER 2027:** Lagoon/Beach 100% Design (Funding Required)
- 2029+:** Earliest Construction, Post Olympics (Funding Required)

# FOR MORE INFORMATION

- Visit Project Website:
  - [TopangaLagoonRestoration.org](https://TopangaLagoonRestoration.org)
- Access Current News, FEIR and Meeting Recordings at “What’s New” Tab
- Get on Contact List at “Stay Connected” Tab
- Email Us:
  - [TopangaLagoonRestoration@gmail.com](mailto:TopangaLagoonRestoration@gmail.com)

