

TOPANGA LAGOON RESTORATION PROJECT

DEIR PUBLIC REVIEW MEETING

...will begin at 6 pm

Email Comments to:
TopangaLagoonRestoration@gmail.com

BEFORE WE BEGIN.. A LITTLE HOUSEKEEPING



TOPANGA LAGOON RESTORATION PROJECT

CEQA Public
Review Meeting

Topanga Community
Center
2/28/2024



RCDSMM

An aerial photograph of a coastal area. In the foreground, large, white-capped waves are crashing onto a sandy beach. Behind the beach, there is a paved road with some parked cars and a few buildings. In the background, a multi-lane highway runs horizontally across the frame. The text is overlaid on the upper half of the image.

**We recognize and acknowledge the first people
of this ancestral and unceded territory of the community of Topaa'nga,
where the water meets the rocks,
now occupied by Topanga State Park, Pacific Coast Highway
& Topanga Beach.**

**We honor the elders of the Tovaangar communities past and present,
and their descendants who are members and citizens of the
Gabrielino Tongva Indians of California, the San Gabriel Band of Mission Indians,
and the Fernandeño Tataviam Band of Mission Indians.**

**We recognize that these tribes are still here and
we are committed to preserving their heritage, respecting their traditional
knowledge, and lifting up their culture and community.**

PURPOSE OF MEETING

Continue the CEQA Process

- The Notice of Presentation (NOP), published on May 23, 2022, initiated the environmental review process for the environmental impact report (EIR).
- The EIR Scoping Meeting occurred on June 11, 2022.
- The Draft EIR was published for public review on February 12, 2024.
- 60-day public review and comment period for Draft EIR through April 12, 2024.

PURPOSE OF MEETING

Describe the Project

- Overview of project objectives
- Overview of project description
- Summary of key issues and conclusions provided in the DEIR

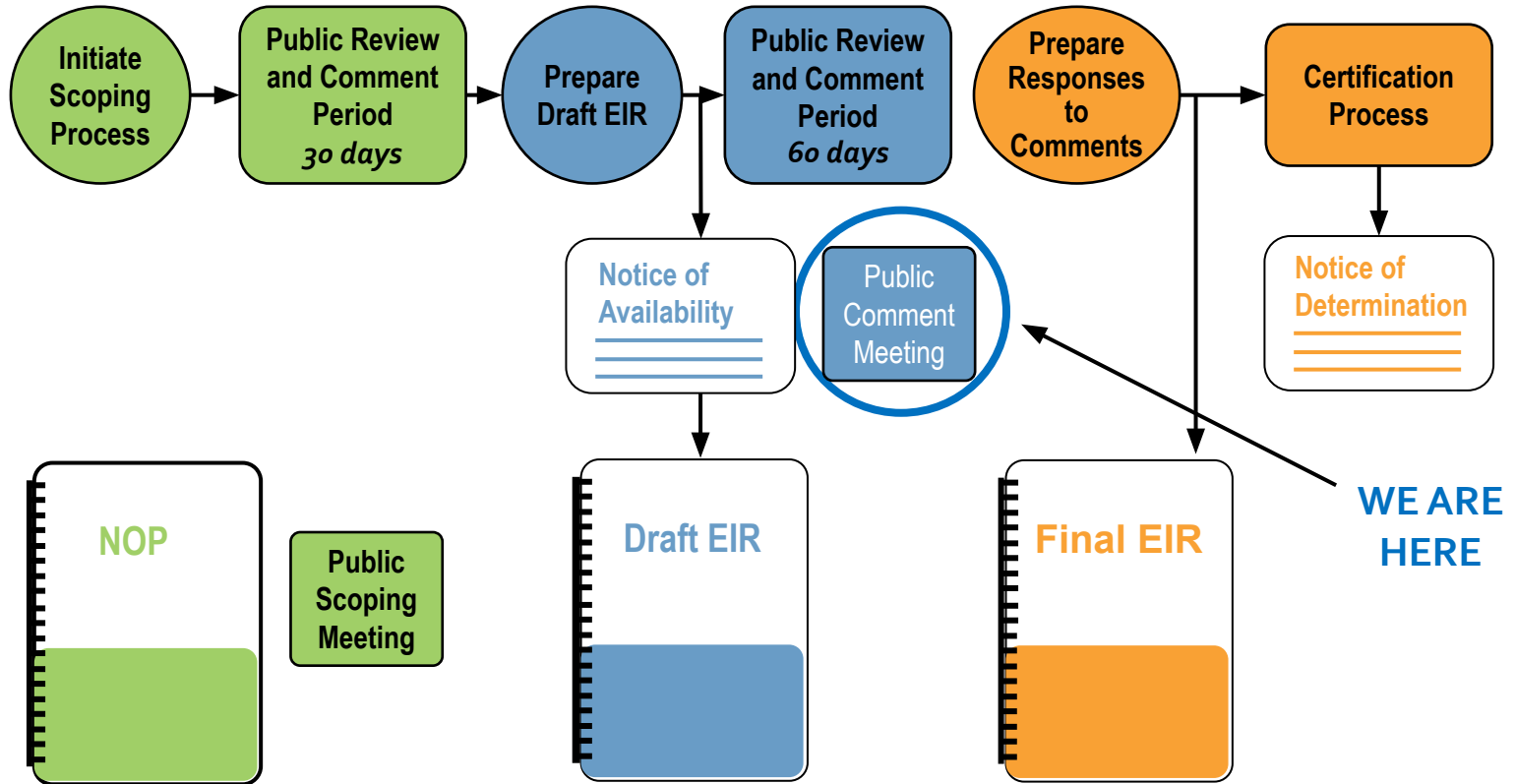
Receive Public Comments on Draft EIR Contents

- Comments may be provided verbally, by email, or by mail
- Final EIR will provide responses to all comments received

California Environmental Quality Act (CEQA)



CEQA PROCESS FOR TOPANGA LAGOON RESTORATION PROJECT

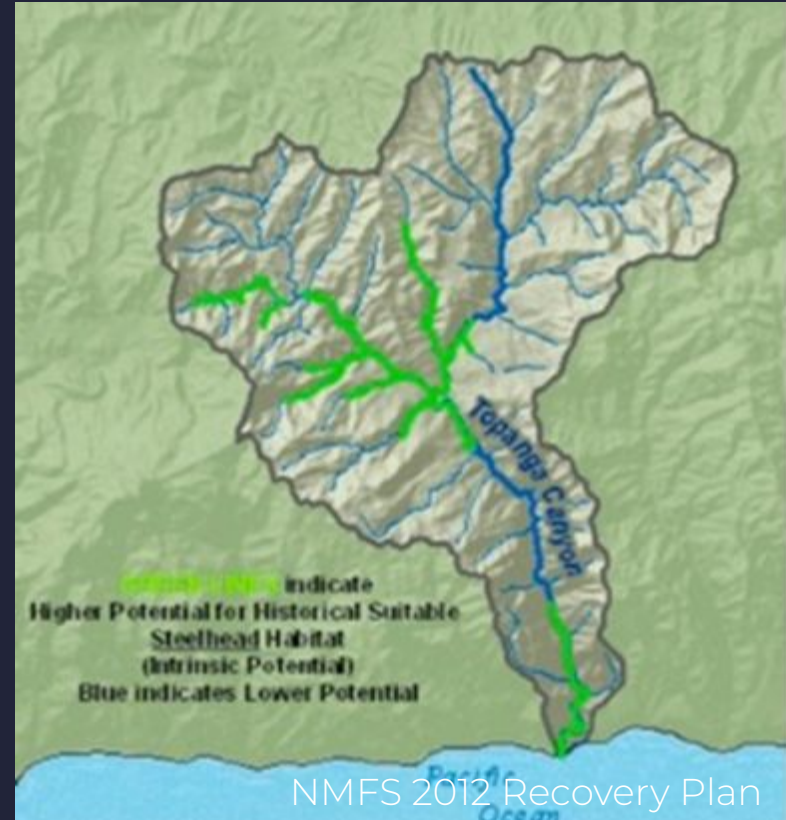
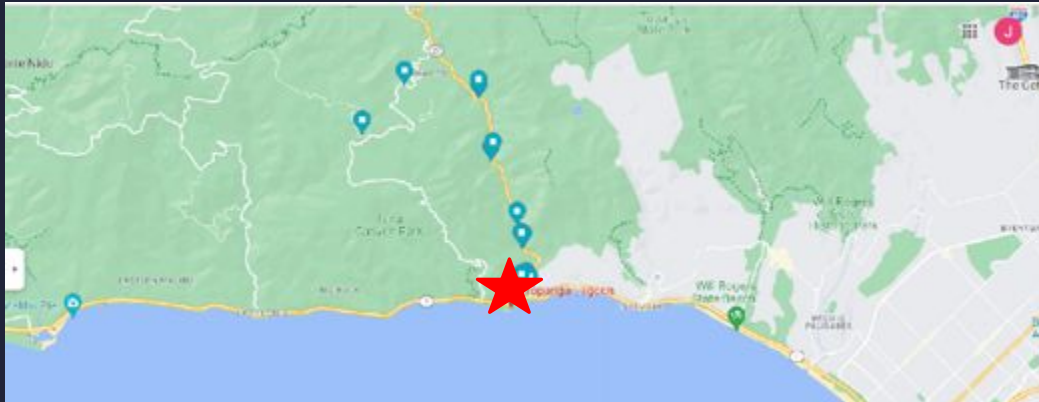


ORGANIZATION OF DRAFT EIR

- Executive Summary
- Section 1 Introduction
- Section 2 Project Description
- Section 3 Environmental Impact Analysis
- Section 4 Other CEQA Considerations
- Section 5 Growth Inducement
- Section 6 Alternatives Analysis
- Section 7 List of Preparers

TOPANGA LAGOON SNAPSHOT

- E Gateway to Santa Monica Mountains & Beach
- Topanga Creek Watershed
- W of Topanga Canyon Blvd/Hwy 1



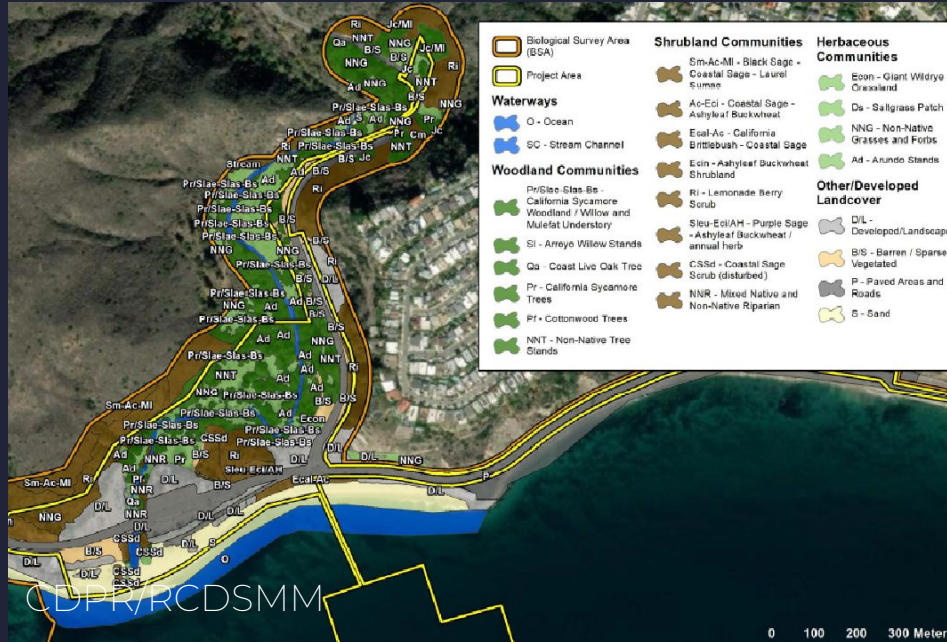


Sources: Project Boundary (EPD, Moffatt & Nichol, RCDSMM 9/20/2023), Los Angeles County Parcels – (Los Angeles County Department of Regional Planning, 2023)

Service Layer Credits: Sources: Esri, HERE, Garmin, Intermap, increment P Corp., GEBCO, USGS, FAO, NPS, NRCAN, GeoBase, IGN, Kadaster NL, Ordnance Survey, Esri Japan, METI, Esri China (Hong Kong), (c)

PROJECT PURPOSE & NEEDS

DISAPPEARING & DAMAGED ECOSYSTEMS



Many Sensitive Ecosystems

Chance to Repair Damage



PROJECT NEED: DISAPPEARING WETLANDS



North of
Topanga Beach

Topanga Lagoon 1916

Randy Young Collection



Topanga Lagoon 1933

Benjamin & Gladys Thomas Air Photo Archive



Topanga Lagoon 1939

Benjamin & Gladys Thomas Air Photo Archive



Topanga Lagoon Today

Google Earth

A LAST REFUGE FOR ENDANGERED FISH

Tidewater Goby

- Prefers freshwater lagoon
- Healthy population in Topanga
- Need refuge from storm flows

Steelhead Trout

- Anadromous life cycle
- Project is key to species survival
- Only reproducing population in SMM
- Need for improved fish passage



TRIBAL CULTURAL RESOURCES PROTECTION/INTERPRETATION

- Protect Gabrielino/Tongva Cultural Sites
- How Do We Honor & Interpret *Topaa'nga* Heritage at Gateway Corner?



HISTORICAL RESOURCES DEVELOP, PLAN & INTERPRET

- Topanga Ranch Motel: National Register of Historic Places Eligible
- Determine Future of Historic-Period Structures & Features



RECREATION/COASTAL ACCESS NEEDS

- Limited Access to Lower Topanga State Park
- Popular Beach, Limited Visitor Services



NEED EASIER ACCESS ROUTES



NEED FOR DISTRIBUTED PARKING PLAN

all of this is existing
concession parking
sometimes used as
opportunistic fee
beach parking by
concessionaire

existing concession
parking (20 spaces)

existing
parking (22 spaces)

EMERGENCY SERVICES BARRIERS



STORM VULNERABILITY



Beach Loss




Structures Threatened

SEA LEVEL RISE THREATS

USGS CoSMoS 3.2ft (1m) SLR

 Annual Storm, Maximum Inundation

 Annual Storm, Minimum Inundation



MOFFATT & NICHOL/COSMOS

PROJECT GOALS

WE HEARD YOUR VOICES!

- 1999-2004 Initial Design, PSR/PDS
- 2012 Topanga General Plan
- 2020, 2021 Public Charrettes
- 2022 Public EIR Scoping Mtg
- 2023 Annual Public Meeting



KEY PUBLIC COMMENTS

- Maximize Restoration & Native Habitats, Wetted/Riparian Focus
- Plan for SLR: Relocate Lifeguard Building/Infrastructure Inland
- Improve Lagoon Function, Endgrd Fish Habitat & Water Quality.
- Retain Surf Break, Nourish Nearshore
- Highlight Cultural Resources: Native American History – Present
- Preserve Visitor Services (Reel Inn, Cholada, Wylie's Bait Shop)
- Decide Motel's Future: Affordable Overnight or Day-Use?
- Retain Parking, Boost Public Transport Access & Manage Traffic



PROJECT GOALS = PROJECT NEEDS + PUBLIC INPUT + BEST AVAILABLE SCIENCE

Expand and restore the lagoon ecosystem; integrate public access, recreation, and visitor serving needs; and proactively address sea level rise, while protecting existing biological, cultural and recreational resources.

SPECIFIC PROJECT GOALS

- Lagoon Ecosystem Restoration and Expansion
- Estuary Function & Water Quality Improvement
- Sensitive Species Protection
- Caltrans Bridge Replacement for Species Recovery
- Climate Resilience Enhancement
- Minimal Disruption During Construction

SPECIFIC PROJECT GOALS

- Beach Enhancement, Surf Break Protection
- Create a “Gateway Corner”: Urban/Wildlands Interface with Interpretation/Visitor Services
- Balanced Improvements:
 - Recreation Facilities
 - Emergency Services
 - Inclusive Coastal Access (ADA, Bike, Bus)

PROJECT ALTERNATIVES



ALTERNATIVE 1: NO PROJECT



IF WE DO
NOTHING...



**ALTERNATIVES 2-4
HAVE A LOT IN COMMON**

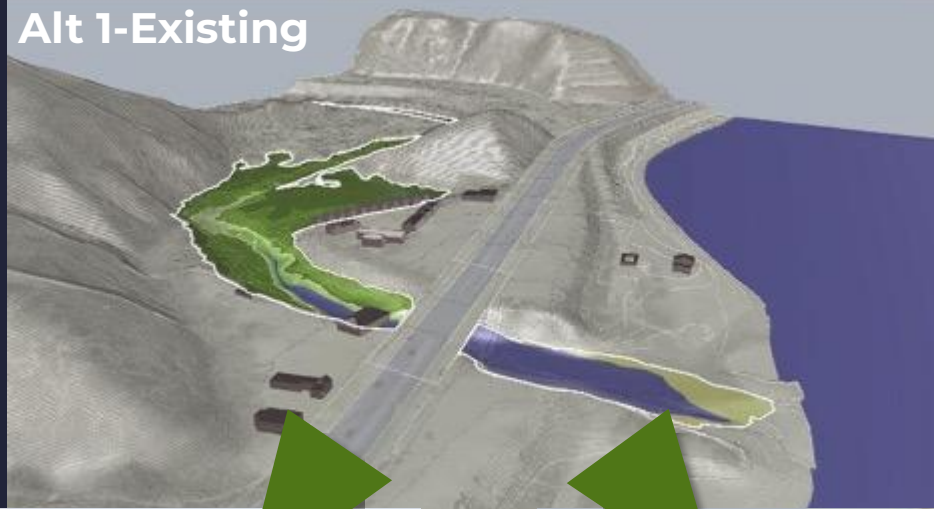
COMMON ELEMENTS

- Longer PCH Bridge Over Lagoon (79' to 460')
- Expanded and Restored Lagoon Ecosystem
- Development of New Visitor Services
- 1 Concession Remains
- Wastewater System Upgrades

PROJECT BENEFIT: BIGGER/HEALTHIER ECOSYSTEMS

- Longer Bridge Expands Lagoon Footprint
- Improves Fish Passage & Refugia
(+ 7-10 Acres Lagoon, ~30+ Restored Upland Acres)
- More “Freedom Space”/ Resiliency
- Nearshore Benefit: ~ 200K CY Placed Locally & Not Trucked Away
- Degraded Habitats Restored

Alt 1-Existing



RCDSMM

Alt 2-Maximize Restoration



Alt 3-Maximize Historic



PROJECT BENEFIT: COASTAL RESILIENCY

- Improved Emergency Response
- Nearshore Nourishment
- Increased Beach Widths
- Structures Setback for SLR



RCDSMM



LACFD

OPPORTUNITY FOR NEW BEACH HABITAT



Existing Beach View
Looking East

Simulated View of
Alternative 4



PROJECT BENEFIT: COASTAL ACCESS IMPROVEMENTS

- Expanded/Coordinated Parking Options
- Improved Bus Stop and Biking Amenities



Alternative 2
Chris Nelson & Associates

PROJECT BENEFIT: IMPROVED VISITOR EXPERIENCE

- New “Gateway Corner” Visitors Hub
- New Interpretive Features
- Expanded Access into Lower Topanga State Park
- Potential for Increased Day Use or Low Cost Overnight Accommodations
- Park Visitor Serving Concession Opportunity



PROJECT BENEFIT: CULTURAL RESOURCES

- Identifies Plan for Topanga Ranch Motel
- Provides Interpretation of Cultural Resources
- Protects Tribal Cultural Resources



ALTERNATIVE 2: MAXIMIZE LAGOON

- Max Benefit to Lagoon/Creek (from ~0.5 to ~10 ac.)
- Max Habitat for Species
- Helipad at Beach Level
- Fully Removes Topanga Ranch Motel = Significant and Unavoidable Cultural Impact



ALTERNATIVE 3: MAXIMIZE HISTORIC

- Restored Historical Topanga Ranch Motel
- Least Wetted and Riparian Habitat (from ~0.5 to ~8 ac.)
- Helipad at PCH Level
- No Significant & Unavoidable Impacts



RCDSMM

ALTERNATIVE 4: MAXIMIZE SLR RESILIENCE

- PCH Realignment
N =Significant &
Unavoidable Tribal
Impact
- Partially Restored
Motel
- Wetted/Riparian
Habitat
(from ~0.5 to ~8 ac.)
- Maximum Setback
of Beach Facilities
- Helipad at Beach
Level



TOPANGA BEACH DETAIL
Alternative 4 new sand area (yellow)
1.78 acres

new building
new parking
new sand



ALTERNATIVE 4 BEACH DETAILS

RCDSMM

WASTEWATER MANAGEMENT OPTIONS



WASTEWATER TREATMENT OPTIONS

ADVANCED ONSITE WASTEWATER TREATMENT SYSTEM (AOWTS)

- *Option 1-Subsurface Drip Irrigation (SDI):* Only supports Alternative 2, located in disturbed habitat and fill areas.
- *Option 2-Seepage Pits:* Usable by all project alternatives. Located ½ mile from facilities. Disturbed habitat, some adjacent native trees.

Sewer Extension

- Option 3-One-mile extension along PCH: Adds ~ 1 year to^{ESA} construction, potential for PCH lane closure, geotechnical constraints.

**PREFERRED ALTERNATIVE &
WASTEWATER MANAGEMENT OPTION
WILL BE SELECTED
AFTER
PUBLIC REVIEW AND INPUT**

SUMMARY OF IMPACTS

Impacts from Construction (All Alternatives)

- Temporary impacts to lagoon and offshore ecosystem
- Temporary air emissions and noise impacts
- Temporary disruption to beach access, parking, traffic, and emergency access

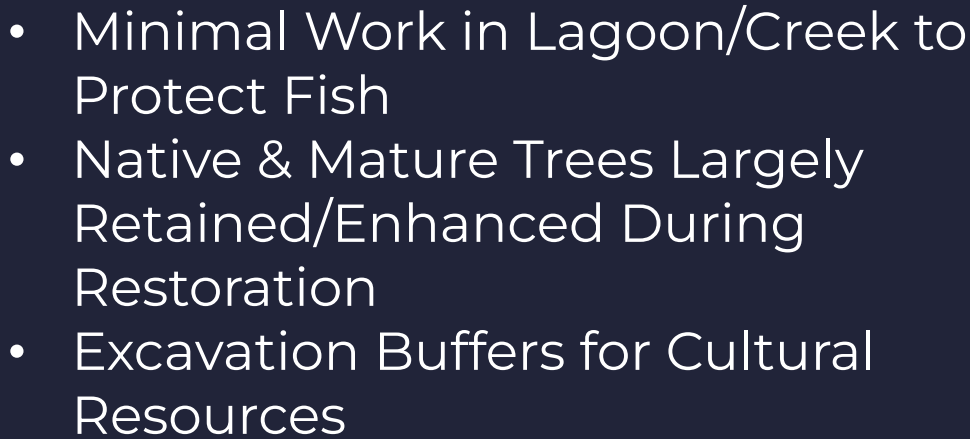
Significant Unavoidable Impacts

- Significant impact to historic structures (Alternative 2)
- Significant impact to archaeological resources (Alternative 4)

Environmentally Superior Alternative

- Alternative 3 has no significant & unavoidable impacts

MITIGATION MEASURES DURING CONSTRUCTION



MITIGATION MEASURES: MINIMIZE CONSTRUCTION HASSLES

- Commute Protected: 4 PCH Lanes Open During Bridge/Lagoon Restoration
- Provide Coastal Access and Parking at All Times



MITIGATION MEASURES: EMERGENCY ACCESS PRESERVED



PROJECT STATUS/TIMELINE

2022-2024 Environmental Review

- **Feb 12 2024-April 12 2024 at 5 pm**
EIR Public Comment Period
- June 2024: Preferred Alternative
Selected & EIR Finalized

2024-2026 Design Phase

- Complete Design for Preferred
Alternative & Permit Applications

2027-2031 Construction

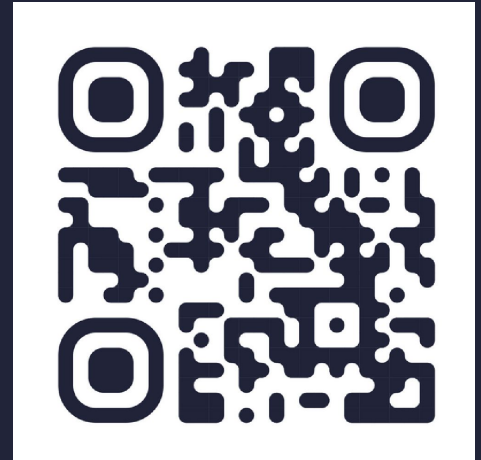
(+1 Year if Sewer Option Selected)

2031-2036 Post-Construction Monitoring



FOR MORE INFORMATION

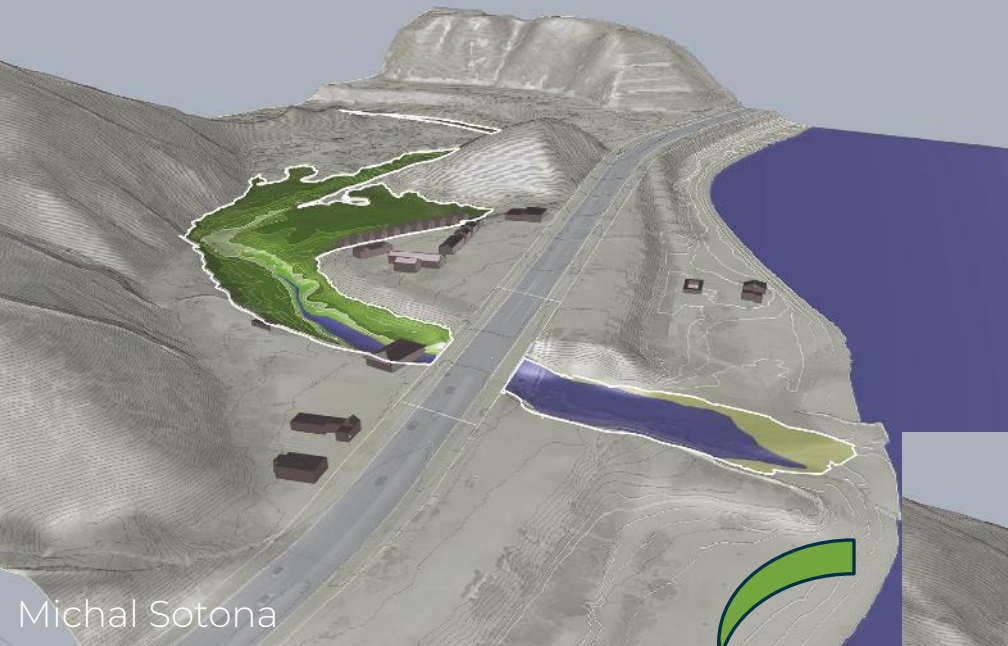
- **Visit Project Website:**
<https://www.TopangaLagoonRestoration.org>
- Access the DEIR and Meeting Recordings at “What’s New” Tab.
- Submit Comments or Get on Contact List at “Stay Connected” Tab.
- Email Us:
TopangaLagoonRestoration@gmail.com



THANK YOU!



**Assemblymember
Richard Bloom**



Michal Sotona

IMAGINE!



Michal Sotona

HOW TO PROVIDE COMMENTS

Until 4/12/24, 5 pm

- **During This Public Meeting**

: In person or via project email
: *** 2 Min. Maximum, Please Be Respectful!

- **Email**

: TopangaLagoonRestoration@gmail.com

- **Project Website**

: TopangaLagoonRestoration.org
: Go to “What’s New” tab.

- **US Mail**

: California State Parks
: Attn: John Ota, Environmental Scientist
: 1925 Las Virgenes Road, Calabasas, CA 91302

A scenic landscape featuring a beach, ocean, and mountains at sunset. The sun is low on the horizon, casting a warm, golden glow over the scene. The ocean waves are breaking onto the shore, and the mountains in the background are silhouetted against the bright sky. The time "10:00" is overlaid in large white digits in the center of the image.

10:00